

9265C
NEW AGE



RADIOCONTROL

9265C

FERRARI
PASSION FOR LIFTING

9265C



Extension Quick System and Smart Extension Sequence
Fast, precise, safe

Heavy duty hook attachment
Ruggedness and durability in all applications

Link on second boom
Boom negative angle allows access to confined spaces

Link on column
Constant lifting capacity on all main boom positions

Endless slewing
Efficient use in all the vehicle positions

Ergonomic control station and user-friendly interface
Comfortable, convenient and safe

Always stable
More than 40 stabilizer combinations available

Break the boundaries in performance and safety

180E32 E6





7" color display
Simple and quick access to all the functions and information

Vertical stabilizer levers
Safe and fast. Excellent supervision of stabilizing operation

Ergonomic control station engineered for maximum operator comfort and ease of operation

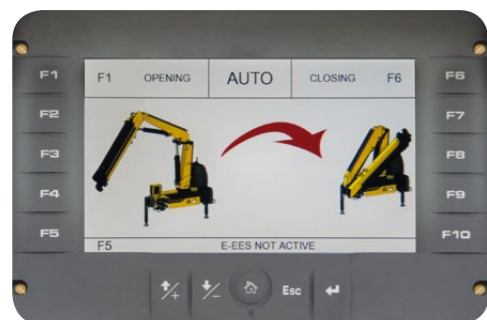
Dynamic Load Diagram



Crane lifting capacity always under control in all stabilizer positions.
After the truck has been stabilized, the operator selects the load weight to be lifted. The display shows the permitted crane outreach based on the truck stability and load selected.

- Improved efficiency
- Easy to use
- Optimised safety

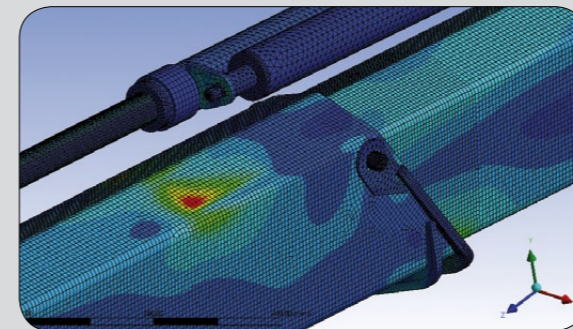
Magic Touch



Crane Automatic folding/unfolding.
This system allows the operator to unfold the crane to a working position and fold the crane from any position to transport position by pressing a single button on the radio transmitter or display.

- Easy to start and close
- Save time
- Increased productivity and safety

High-tech development



- Structures optimised for strength, weight and speed

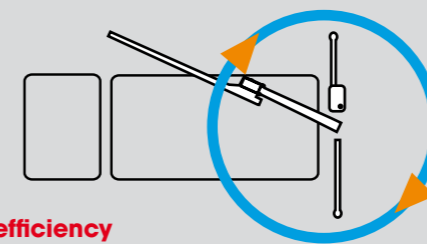
Top Protection



- High value retention
- Top reliability

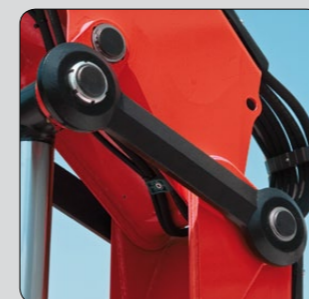
Endless performance

Continuous rotation and extreme flexibility
Endless slewing allows the crane to be operated without restrictions. The complete access to the working area, eliminates the need to reposition the truck, optimizing precision, productivity and safety.

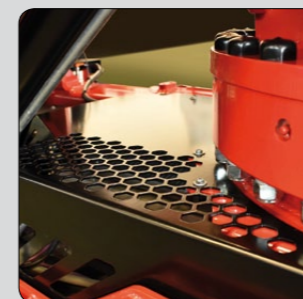


- Top efficiency
- Easy to use

Functional Aesthetic



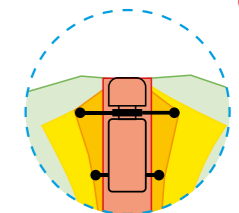
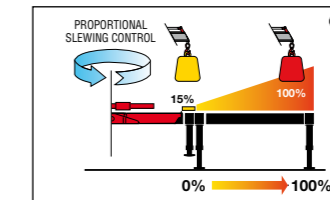
Forged double linkages on column and 2nd boom



Hex Deck cover on base

Crane control system (CC)

P - Class



- Proportional stabilizers control
 - Proportional slewing control
 - Truck side independent
- Stabilizer's cylinders not on the ground
 - 0% stabilizer's beams and stabilizer's cylinders on the ground
 - 50% stabilizer's beams and stabilizer's cylinders on the ground
 - 100% stabilizer's beams and stabilizer's cylinders on the ground
 - Nominal pressure

Ⓢ The percentages present in the pictures are merely examples and they have no bearing on the cranes' real lifting capacities. The cranes' real lifting capacity will depend on truck's stability.

Human machine interface

Smart Top monitor 7"



Up to 16 languages available into the software. Top choice available for the range. Data statistics and crane management, all included into a 7" TFT monitor giving to the operator a higher level of awareness of the crane.

Crane controls

LCD Remote control

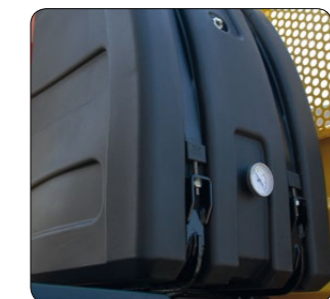


Each transmitter is equipped with 8 ergonomic proportional levers (6 for Scanreco mini) to control up to 8 functions of the crane. Using two hands, the operator can move 2-3-4 functions at once. This ensure more speed in loading or unloading operations with high precision.

Graphic remote control



Top visualization on 3" graphic display on the remote transmitter. Improved crane data visualization and crane control. Top level class of offer in the range.



High volume oil tank made in sandwich-structured materials (PEX and PA6)



Robust column design and hoses cover

9265C
NEW AGE



Quality and environmental certified



F.lli FERRARI

Via Einstein, 8
42028 Poviglio (RE) Italy
Tel. +39 0522/486308
Fax +39 0522/486330
info@flliferrari.it
marketing@flliferrari.it
www.flliferrari.com

Dealer

Data, descriptions, and illustrations pertain only and uniquely to models sold at the time of printing of this brochure. After the date of printing this information is purely indicative and not binding upon F.lli Ferrari. Future modifications are solely at the discretion of F.lli Ferrari and are always in compliance with applicable and pertinent safety standards. To obtain updated data, descriptions, and illustrations, contact the manufacturer or your reseller. Cranes manufactured and/or marketed by F.lli Ferrari.