



**TRUCK
Mounted
CRANES**

1 - 90 tm Families

Ferrari
PASSION FOR LIFTING





CLASSIC LINE

300

Compact telescopic

Page 8 to page 15

500

Small articulated

Page 16 to page 25

700

***Articulated with
double linkage***

Page 70 to page 83

900

***Endless slewing
with double linkage***

Page 116 to page 119

NEW AGE

7000

Articulated

Page 26 to page 69

9000C

***Endless slewing
with double linkage***

Page 104 to page 115

7000D

Telescopic boom

Page 120 to page 123

6000

Medium articulated NO CE

Page 84 to page 93

8

Basic articulated NO CE

Page 94 to page 103

SKY

Self-Aligning basket

Page 124 to page 127

Features & Accessories

Thousand reasons to choose F.lli Ferrari

tm

1

3

6

9

300

from 1 to 3,5 tm Class

Compact
telescopic

500

from 3 to 8 tm Class

Small
articulated

7000

from 9 to 44 tm Class

NEW AGE
articulated

700

from 29 to 49 tm Class

Articulated
with double linkage

6000

from 10 to 23 tm Class

Medium articulated
NO CE

8

from 10 to 26 tm Class

Basic articulated
NO CE

9000 C

from 23 to 66 tm Class

NEW AGE
endless slewing
with double linkage

900

from 80 to 90 tm Class

Endless slewing
with double linkage

7000 D

from 16 to 24 tm Class

NEW AGE
Telescopic boom

SKY

from 5 to 7 tm Class

Telescopic boom
Self-Aligning basket

F.lli Ferrari cranes offer the flexibility to handle any loading and lifting needs

18

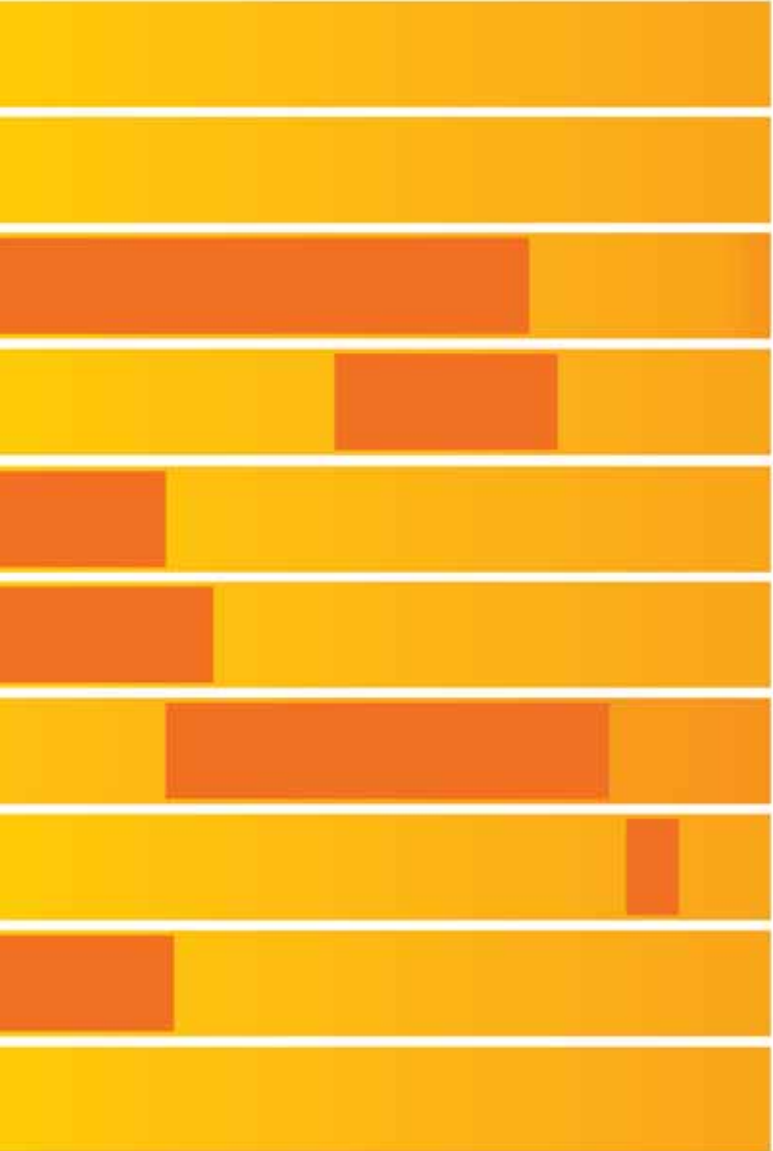
26

29

35

50

90





300 Series

Compact telescopic

310

314

315

317

321

322

326

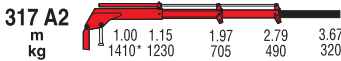
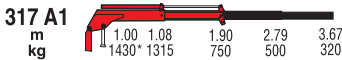
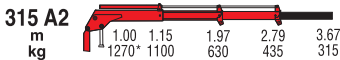
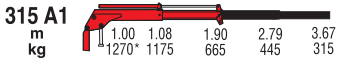
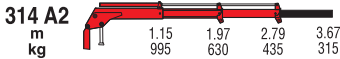
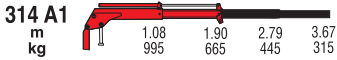
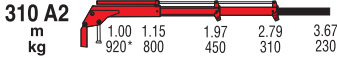
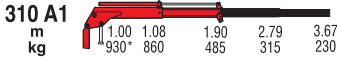
329

330

350



300



*) Theoretical lifting capacity

MODELS	LIFTING MOMENT	SLEWING ANGLE	WORKING PRESSURE	OIL TANK CAPACITY	MAX OIL FLOW	MAX. VERTICAL REACH (HYDR.)	CRANE WEIGHT	DIMENSIONS
	tm	°	bar	l	l/min	m	kg	mm BxhxS
310 A1	0,93	328	180	17,5	5	3,01	145	595x1240x370
310 A2	-	328	180	17,5	5	3,85	175	647x1240x370
314 A1	1,27	335	160	17,5	8	2,98	174	620x1241x430
314 A2	-	335	160	17,5	8	3,8	193	672x1241x430
315 A1	1,27	335	160	17,5	8	2,98	174	620x1241x430
315 A2	-	335	160	17,5	8	3,8	199	672x1241x430
317 A1	1,43	335	170	17,5	6	2,98	174	620x1241x430
317 A2	-	335	170	17,5	6	3,8	199	672x1241x430





300



329 A1		1.33 995	2.26 995	3.25 820	4.25 610	
329 A2		1.39 995	2.32 995	3.25 815	4.25 600	
329 A3		1.48 995	2.40 995	3.33 775	4.25 600	5.20 460

330 A1		1.00 2730*	1.33 2055	2.26 1210	3.25 820	4.25 610	
330 A2		1.00 2690*	1.39 1935	2.32 1150	3.25 815	4.25 600	
330 A3		1.00 2710*	1.48 1830	2.40 1095	3.33 775	4.25 600	5.20 460

350 A1		1.00 3450*	1.44 2390	2.50 1380	3.64 935	4.77 690	5.91 530	7.01 405
350 A2		1.00 3430*	1.52 2255	2.58 1310	3.64 925	4.77 690	5.91 530	7.01 405
350 A3		1.00 3390*	1.59 2130	2.65 1250	3.71 875	4.77 675	5.91 530	7.01 405
350 A4		1.00 3360*	1.67 2010	2.73 1185	3.79 830	4.85 635	5.91 520	7.01 405

*) Theoretical lifting capacity

MODELS	LIFTING MOMENT	SLEWING ANGLE	WORKING PRESSURE	OIL TANK CAPACITY	MAX OIL FLOW	MAX. VERTICAL REACH (HYDR.)	CRANE WEIGHT	DIMENSIONS
	tm	°	bar	l	l/min	m	kg	mm BxhxS
329 A1	2,75	335	160	17,5	8	3,59	263	910x1521x440
329 A2	-	335	160	17,5	8	4,49	295	980x1521x440
329 A3	-	335	160	17,5	8	5,39	321	980x1521x440
330 A1	2,73	335	160	17,5	10	3,58	263	730x1587x440
330 A2	-	335	160	17,5	10	4,49	298	753x1587x440
330 A3	-	335	160	17,5	10	5,39	323	753x1587x440
350 A1	3,45	395	175	17,5	10	3,94	305	976x1702x490
350 A2	-	395	175	17,5	10	4,98	339	1040x1702x490
350 A3	-	395	175	17,5	10	6,01	371	1040x1702x490
350 A4	-	395	175	17,5	10	7,04	399	1040x1702x490



500 Series

Small articulated

531

538

543

553

563

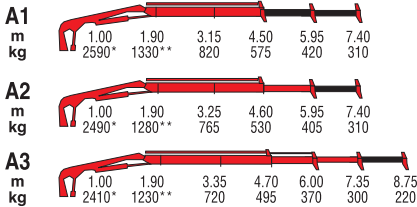
573

583



531

531R



*) Theoretical lifting capacity

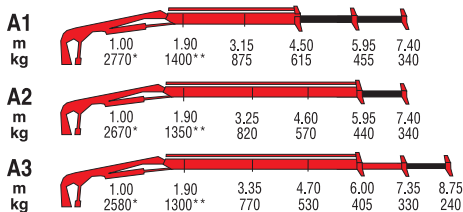
***) Capacity at fixed hook (only if with load limiting device in EC area)

MODELS	LIFTING MOMENT	SLEWING ANGLE	WORKING PRESSURE	OIL TANK CAPACITY	MAX OIL FLOW	MAX. VERTICAL REACH (HYDR.)	CRANE WEIGHT (STAB. STANDARD)	DIMENSIONS
	tm	°	bar	l	l/min	m	kg	mm BxhxS
A1	2,59	370	175	25	8	6,98	450	1860x1590x490
A2	-	370	175	25	8	8,32	485	1920x1590x490
A3	-	370	175	25	8	9,66	515	2000x1590x490



538

538R



*) Theoretical lifting capacity
 **) Capacity at fixed hook (only if with load limiting device in EC area)

MODELS	LIFTING MOMENT	SLEWING ANGLE	WORKING PRESSURE	OIL TANK CAPACITY	MAX OIL FLOW	MAX. VERTICAL REACH (HYDR.)	CRANE WEIGHT (STAB. STANDARD)	DIMENSIONS
	tm	°	bar	l	l/min	m	kg	mm BxhxS
A1	2,77	370	185	25	8	6,98	450	1860x1590x490
A2	-	370	185	25	8	8,32	485	1920x1590x490
A3	-	370	185	25	8	9,66	515	2000x1590x490



543

543R



RADIOCONTROL

A1	
m	1.00 2.20 3.86 4.98 6.44
kg	3980* 1750** 995 770 550
A2	
m	1.00 2.20 3.67 5.03 6.39 7.85
kg	3820* 1650** 990 710 550 420
A3	
m	1.00 2.20 3.77 5.13 6.49 7.85 9.31
kg	3690* 1650** 930 650 500 410 320
A4	
m	1.00 2.20 3.87 5.23 6.59 7.95 9.31 10.77
kg	3480* 1580** 870 600 450 360 300 240

*) Theoretical lifting capacity

***) Capacity at fixed hook (only if with load limiting device in EC area)

MODELS	LIFTING MOMENT	SLEWING ANGLE	WORKING PRESSURE	OIL TANK CAPACITY	MAX OIL FLOW	MAX. VERTICAL REACH (HYDR.)	CRANE WEIGHT (STAB. STANDARD)	DIMENSIONS
	tm	°	bar	l	l/min	m	kg	mm BxhxS
A1	3,98	380	235	35	16	7,82	710	2165x1845x560
A2	-	380	235	35	16	9,26	760	2165x1845x560
A3	-	380	235	35	16	10,65	810	2165x1845x560
A4	-	380	235	35	16	12,06	855	2165x1845x560

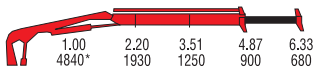


553

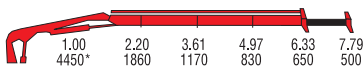
553R



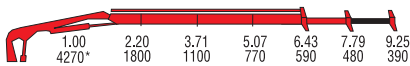
A1
m
kg



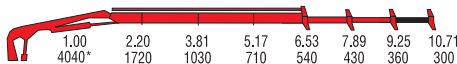
A2
m
kg



A3
m
kg



A4
m
kg



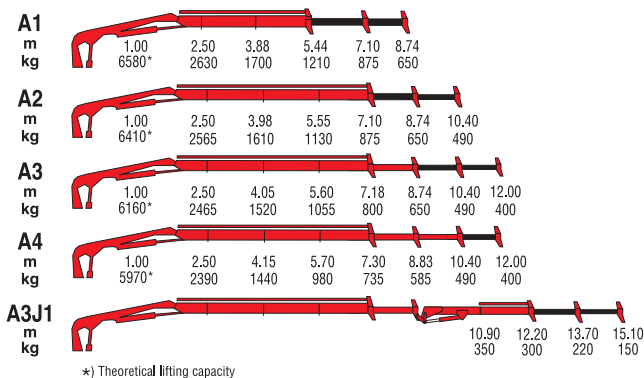
*) Theoretical lifting capacity

MODELS	LIFTING MOMENT	SLEWING ANGLE	WORKING PRESSURE	OIL TANK CAPACITY	MAX OIL FLOW	MAX. VERTICAL REACH (HYDR.)	CRANE WEIGHT (STAB. STANDARD)	DIMENSIONS
	tm	°	bar	l	l/min	m	kg	mm BxhxS
A1	4,84	380	265	35	16	7,82	730	2165x1845x560
A2	-	380	265	35	16	9,23	780	2165x1845x560
A3	-	380	265	35	16	10,65	830	2165x1845x560
A4	-	380	265	35	16	12,06	875	2165x1845x560



563

563R



MODELS	LIFTING MOMENT	SLEWING ANGLE	WORKING PRESSURE	OIL TANK CAPACITY	MAX OIL FLOW	MAX. VERTICAL REACH (HYDR.)	CRANE WEIGHT (STAB. STANDARD)	DIMENSIONS
	tm	°	bar	l	l/min	m	kg	mm BxhxS
A1	6,58	387	245	35	20	8,34	900	2020x1980x600
A2	-	387	245	35	20	9,81	970	2100x1980x600
A3	-	387	245	35	20	11,34	1030	2220x1980x600
A4	-	387	245	35	20	12,90	1080	2250x1980x600
A3J1	-	387	245	35	20	14,68	1210	2256x1980x725

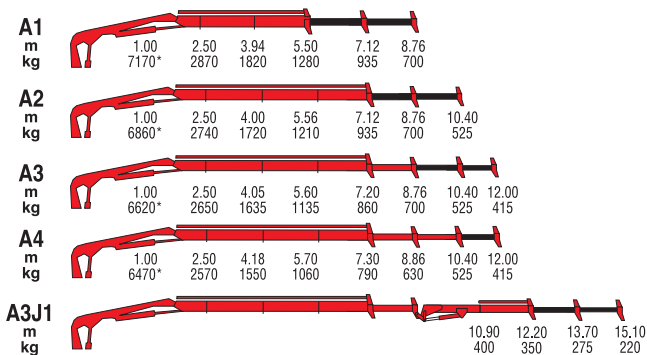


573

573R



RADIOCONTROL



*) Theoretical lifting capacity

MODELS	LIFTING MOMENT	SLEWING ANGLE	WORKING PRESSURE	OIL TANK CAPACITY	MAX OIL FLOW	MAX. VERTICAL REACH (HYDR.)	CRANE WEIGHT (STAB. STANDARD)	DIMENSIONS
	tm	°	bar	l	l/min	m	kg	mm BxhxS
A1	7,17	387	265	35	20	8,50	920	2080x1980x600
A2	-	387	265	35	20	10,20	1000	2155x1980x600
A3	-	387	265	35	20	11,70	1060	2275x1980x600
A4	-	387	265	35	20	13,30	1120	2300x1980x600
A3J1	-	387	265	35	20	15,20	1240	2310x1980x730

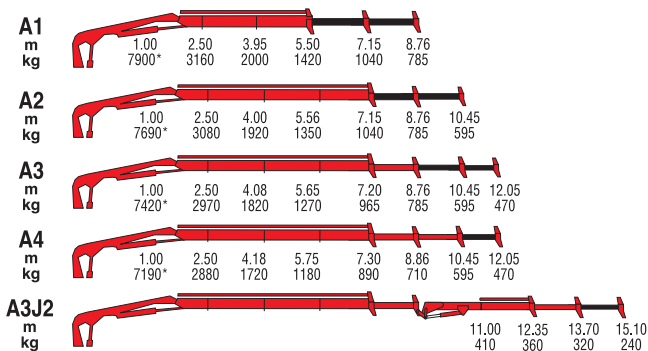


583

583R



RADIOCONTROL



*) Theoretical lifting capacity

MODELS	LIFTING MOMENT	SLEWING ANGLE	WORKING PRESSURE	OIL TANK CAPACITY	MAX OIL FLOW	MAX. VERTICAL REACH (HYDR.)	CRANE WEIGHT (STAB. STANDARD)	DIMENSIONS
	tm	°	bar	l	l/min	m	kg	mm BxhxS
A1	7,9	387	285	35	20	8,50	950	2080x1980x600
A2	-	387	285	35	20	10,20	1030	2155x1980x600
A3	-	387	285	35	20	11,70	1090	2275x1980x600
A4	-	387	285	35	20	13,30	1150	2300x1980x600
A3J2	-	387	285	35	20	16,60	1300	2310x1980x730





NEW AGE

7000 Series

Articulated

7090B

7161C

7091C

71615C

70915C

7183C

7103C

7210B

7111C

7213C

71115C

72135C

7112B

7231C

7125C

7240B

7130B

7243C

7131C

72435C

71315C

7261C

7153C

7401C

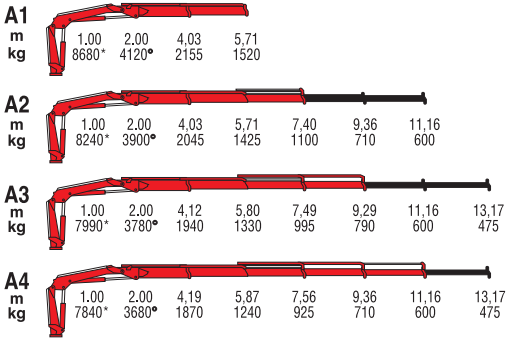
7160B

74015C

7441C



7090B

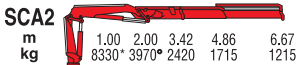
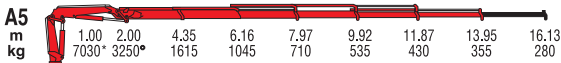
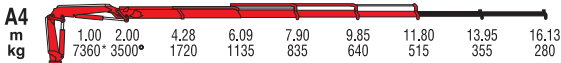
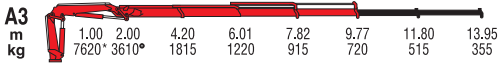
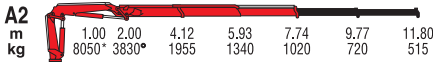


*) Theoretical lifting capacity
 •) Max lifting capacity

MODELS	LIFTING MOMENT	SLEWING ANGLE	WORKING PRESSURE	OIL TANK CAPACITY	MAX OIL FLOW	MAX. VERTICAL REACH (HYDR.)	CRANE WEIGHT (STAB. STANDARD)	DIMENSIONS
	tm	°	bar	l	l/min	m	kg	mm BxhxS
A1	8,7	425	310	75	40	9,1	1140	2305x2070x840
A2	-	425	310	75	40	10,7	1220	2305x2070x840
A3	-	425	310	75	40	12,6	1300	2305x2070x840
A4	-	425	310	75	40	14,4	1370	2305x2070x840

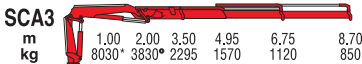


7091C



7091SC

Short boom



- *) Theoretical lifting capacity
-) Max lifting capacity

MODELS	LIFTING MOMENT	SLEWING ANGLE	WORKING PRESSURE	OIL TANK CAPACITY	MAX OIL FLOW	MAX. VERTICAL REACH (HYDR.)	CRANE WEIGHT (STAB. STANDARD)	DIMENSIONS
	tm	°	bar	l	l/min	m	kg	
A1	8,3	425	315	130	40	9,3	1215	2290x2085x840
A2	-	425	315	130	40	10,9	1305	2290x2085x840
A3	-	425	315	130	40	13,1	1395	2290x2085x840
A4	-	425	315	130	40	15,1	1480	2290x2085x840
A5	-	425	315	130	40	17,3	1555	2290x2085x885
SC A2	8,2	425	315	75	40	10,1	1280	2285x2085x840
SC A3	-	425	315	75	40	12,2	1370	2285x2085x840






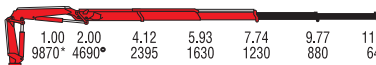
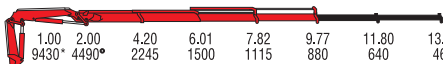
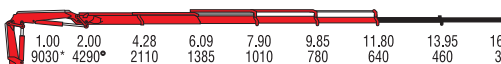
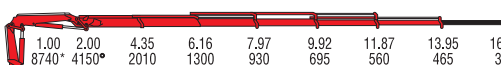
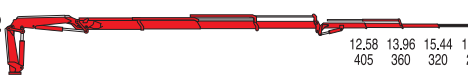
A1		1.00	2.00	4.12	5.93					
m										
kg		9490*	4480*	2285	1600					
A2		1.00	2.00	4.12	5.93	7.74	9.77	11.80		
m										
kg		9130*	4340*	2215	1530	1165	820	605		
A3		1.00	2.00	4.20	6.01	7.82	9.77	11.80	13.95	
m										
kg		8630*	4100*	2055	1385	1035	815	610	430	
A4		1.00	2.00	4.28	6.09	7.90	9.85	11.80	13.95	16.13
m										
kg		8150*	3830*	1905	1255	915	705	580	425	355
A5		1.00	2.00	4.35	6.16	7.97	9.92	11.87	13.95	16.13
m										
kg		7760*	3660*	1785	1155	830	625	500	415	330

*) Theoretical lifting capacity

•) Max lifting capacity

MODELS	LIFTING MOMENT	SLEWING ANGLE	WORKING PRESSURE	OIL TANK CAPACITY	MAX OIL FLOW	MAX. VERTICAL REACH (HYDR.)	CRANE WEIGHT (STAB. STANDARD)	DIMENSIONS
	tm	°	bar	l	l/min	m	kg	mm BxhxS
A1	9,5	425	350	75	40	9,3	1215	2290x2085x840
A2	-	425	350	75	40	10,9	1305	2290x2085x840
A3	-	425	347	75	40	13,1	1395	2290x2085x840
A4	-	425	340	75	40	15,1	1480	2290x2085x840
A5	-	425	336	75	40	17,3	1555	2290x2085x885



A1		1.00	2.00	4.12	5.93							
m		10200*	4860*	2475	1715							
kg												
A2		1.00	2.00	4.12	5.93	7.74	9.77	11.80				
m		9870*	4690*	2395	1630	1230	880	640				
kg												
A3		1.00	2.00	4.20	6.01	7.82	9.77	11.80	13.95			
m		9430*	4490*	2245	1500	1115	880	640	460			
kg												
A4		1.00	2.00	4.28	6.09	7.90	9.85	11.80	13.95	16.14		
m		9030*	4290*	2110	1385	1010	780	640	460	370		
kg												
A5		1.00	2.00	4.35	6.16	7.97	9.92	11.87	13.95	16.14		
m		8740*	4150*	2010	1300	930	695	560	465	370		
kg												
A3 J0302									12.58	13.96	15.44	17.00
m									405	360	320	260
kg												

SCA2		1.00	2.00	3.55	4.99	6.80		
m		9590*	4580*	2231	1643	1239		
kg								
SCA3		1.00	2.00	3.62	5.06	6.87	8.82	
m		9270*	4430*	2156	1563	1154	906	
kg								

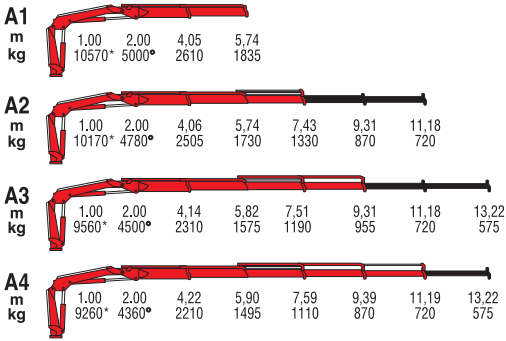
7111SC

Short boom

- *) Theoretical lifting capacity
-) Max lifting capacity

MODELS	LIFTING MOMENT	SLEWING ANGLE	WORKING PRESSURE	OIL TANK CAPACITY	MAX OIL FLOW	MAX. VERTICAL REACH (HYDR.)	CRANE WEIGHT (STAB. STANDARD)	DIMENSIONS
	tm	°	bar	l	l/min	m	kg	
A1	10,2	425	315	75	40	9,5	1315	2280x2110x840
A2	-	425	315	75	40	11,3	1425	2280x2110x840
A3	-	425	315	75	40	13,3	1530	2280x2110x840
A4	-	425	315	75	40	15,4	1625	2280x2110x840
A5	-	425	315	75	40	17,4	1715	2280x2110x885
A3 J0302	-	425	315	75	40	18,8	1870	2280x2420x890
SC A2	8,4	425	315	75	40	10,3	1390	2280x2110x840
SC A3	-	425	315	75	40	12,4	1500	2280x2110x840

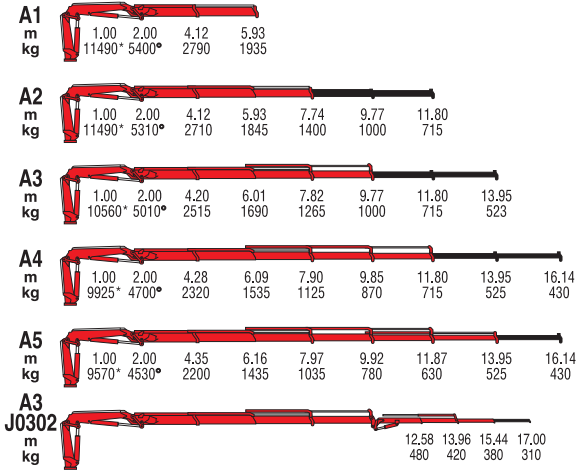




*) Theoretical lifting capacity
 •) Max lifting capacity

MODELS	LIFTING MOMENT	SWINGING ANGLE	WORKING PRESSURE	OIL TANK CAPACITY	MAX OIL FLOW	MAX. VERTICAL REACH (HYDR.)	CRANE WEIGHT (STAB. STANDARD)	DIMENSIONS
	tm	°	bar	l	l/min	m	kg	mm BxhxS
A1	10,5	425	300	75	40	9,2	1240	2310x2100x840
A2	-	425	300	75	40	10,8	1340	2310x2100x840
A3	-	425	300	75	40	12,6	1430	2310x2100x840
A4	-	425	300	75	40	14,4	1520	2310x2100x840

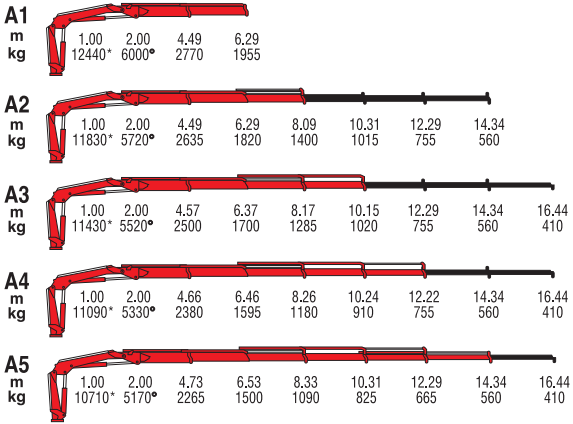




*) Theoretical lifting capacity
 *) Max lifting capacity

MODELS	LIFTING MOMENT	SLEWING ANGLE	WORKING PRESSURE	OIL TANK CAPACITY	MAX OIL FLOW	MAX. VERTICAL REACH (HYDR.)	CRANE WEIGHT (STAB. STANDARD)	DIMENSIONS
	tm	°	bar	l	l/min	m	kg	mm BxhxS
A1	11,5	425	350	75	40	9,5	1315	2280x2110x840
A2	-	425	350	75	40	11,3	1425	2280x2110x840
A3	-	425	345	75	40	13,3	1530	2280x2110x840
A4	-	425	340	75	40	15,4	1625	2280x2110x840
A5	-	425	340	75	40	17,5	1715	2280x2110x885
A3 J0302	-	425	350	75	40	18,8	1870	2280x2420x890

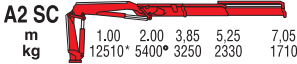
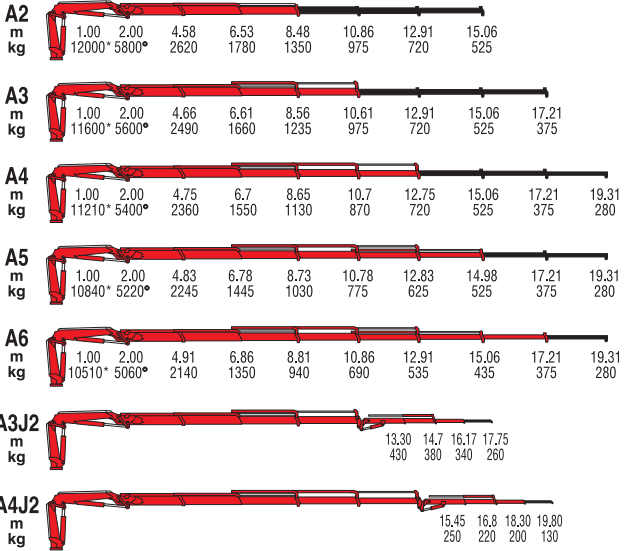




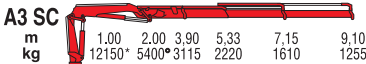
*) Theoretical lifting capacity
 ●) Max lifting capacity

MODELS	LIFTING MOMENT	SLEWING ANGLE	WORKING PRESSURE	OIL TANK CAPACITY	MAX OIL FLOW	MAX. VERTICAL REACH (HYDR.)	CRANE WEIGHT (STAB. STANDARD)	DIMENSIONS
	tm	°	bar	l	l/min	m	kg	mm BxhxS
A1	12,4	425	285	130	60	9,9	1545	2480x2295x825
A2	-	425	285	130	60	11,7	1665	2480x2295x825
A3	-	425	285	130	60	13,7	1780	2480x2295x825
A4	-	425	285	130	60	15,7	1870	2480x2295x825
A5	-	425	285	130	60	17,8	1955	2480x2295x895





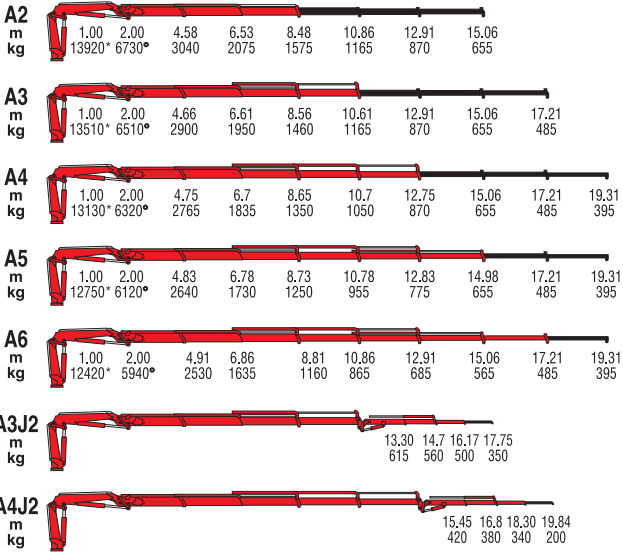
Short boom



*) Theoretical lifting capacity
 *) Max lifting capacity

MODELS	LIFTING MOMENT	SLEWING ANGLE	WORKING PRESSURE	OIL TANK CAPACITY	MAX OIL FLOW	MAX. VERTICAL REACH (HYDR.)	CRANE WEIGHT (STAB. STANDARD)	DIMENSIONS
	tm	°	bar	l	l/min	m	kg	
A2	12,0	425	290	130	60	12,2	1820	2450x2330x825
A3	-	425	290	130	60	14,4	1935	2450x2330x825
A4	-	425	290	130	60	16,5	2040	2450x2330x825
A5	-	425	290	130	60	18,7	2140	2450x2330x895
A6	-	425	290	130	60	21,0	2230	2450x2330x895
A3J2	-	425	290	130	60	19,9	2245	2450x2450x940
A4J2	-	425	290	130	60	22,0	2350	2475x2497x940
SC A2	12,5	425	300	130	60	10,9	1735	2455x2330x825
SC A3	-	425	300	130	60	12,9	1835	2455x2330x825

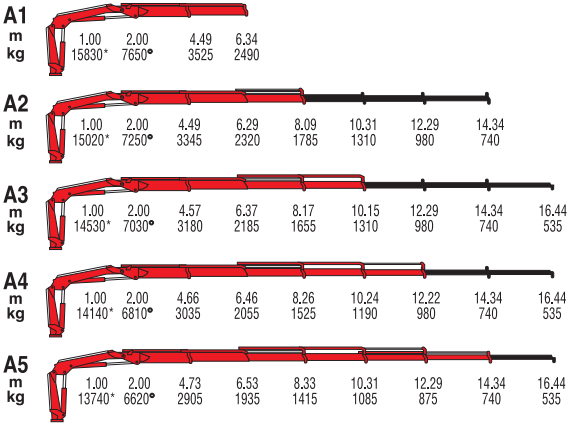




*) Theoretical lifting capacity
 •) Max lifting capacity

MODELS	LIFTING MOMENT	SLEWING ANGLE	WORKING PRESSURE	OIL TANK CAPACITY	MAX OIL FLOW	MAX. VERTICAL REACH (HYDR.)	CRANE WEIGHT (STAB. STANDARD)	DIMENSIONS
	tm	°	bar	l	l/min	m	kg	mm BxhxS
A2	13,9	425	325	130	60	12,2	1820	2450x2330x825
A3	-	425	325	130	60	14,4	1935	2450x2330x825
A4	-	425	325	130	60	16,5	2040	2450x2330x825
A5	-	425	325	130	60	18,7	2140	2450x2330x895
A6	-	425	325	130	60	21,0	2230	2450x2330x895
A3J2	-	425	325	130	60	19,9	2245	2450x2450x940
A4J2	-	425	325	130	60	22,0	2350	2475x2497x940



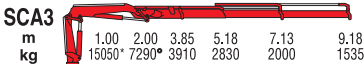
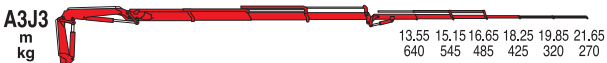
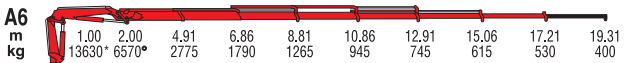
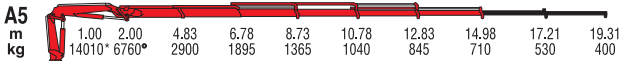
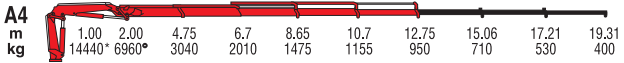
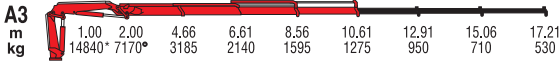
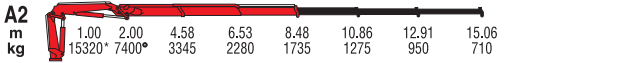


*) Theoretical lifting capacity
 ●) Max lifting capacity

MODELS	LIFTING MOMENT	SLEWING ANGLE	WORKING PRESSURE	OIL TANK CAPACITY	MAX OIL FLOW	MAX. VERTICAL REACH (HYDR.)	CRANE WEIGHT (STAB. STANDARD)	DIMENSIONS
	tm	°	bar	l	l/min	m	kg	mm BxhxS
A1	15,8	425	280	130	60	9,9	1775	2490x2295x825
A2	-	425	280	130	60	11,7	1910	2490x2295x825
A3	-	425	280	130	60	13,7	2025	2490x2295x825
A4	-	425	280	130	60	15,7	2130	2490x2295x825
A5	-	425	280	130	60	17,8	2220	2490x2295x905



7161C



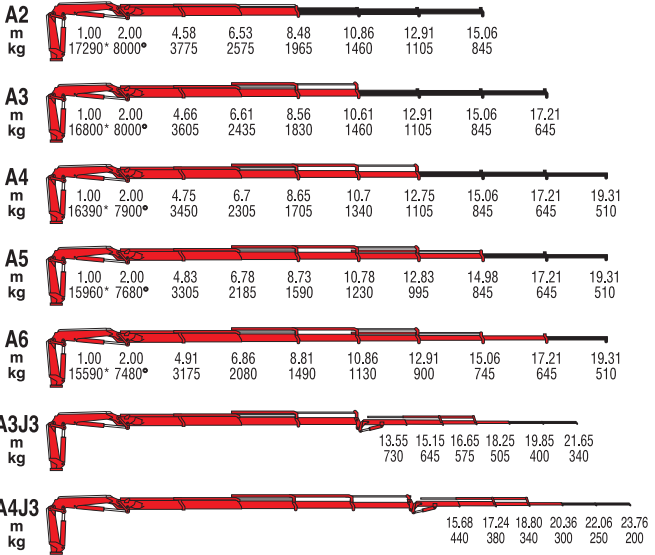
7161SC

Short boom

*) Theoretical lifting capacity
 *) Max lifting capacity

MODELS	LIFTING MOMENT	SWINGING ANGLE	WORKING PRESSURE	OIL TANK CAPACITY	MAX OIL FLOW	MAX. VERTICAL REACH (HYDR.)	CRANE WEIGHT (STAB. STANDARD)	DIMENSIONS
	tm	°	bar	l	l/min	m	kg	mm BxhxS
A2	15,3	425	300	130	60	12,2	1990	2475x2330x825
A3	-	425	300	130	60	14,4	2120	2475x2330x825
A4	-	425	300	130	60	16,5	2240	2475x2330x825
A5	-	425	300	130	60	18,7	2350	2475x2330x905
A6	-	425	300	130	60	21,0	2445	2475x2330x905
A3J3	-	425	315	130	60	21,9	2610	2475x2615x957
A4J3	-	425	-	130	60	25,7	2740	2475x2640x950
SC A2	15,4	425	300	130	60	10,9	1880	2455x2330x825
SC A3	-	425	300	130	60	12,9	2005	2455x2330x825

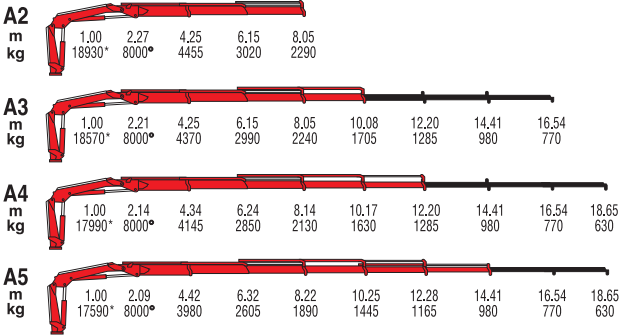




*) Theoretical lifting capacity
 ●) Max lifting capacity

MODELS	LIFTING MOMENT	SLEWING ANGLE	WORKING PRESSURE	OIL TANK CAPACITY	MAX OIL FLOW	MAX. VERTICAL REACH (HYDR.)	CRANE WEIGHT (STAB. STANDARD)	DIMENSIONS
	tm	°	bar	l	l/min	m	kg	mm BxhxS
A2	17,3	425	330	130	60	12,2	1995	2475x2330x825
A3	-	425	330	130	60	14,4	2125	2475x2330x825
A4	-	425	330	130	60	16,5	2245	2475x2330x825
A5	-	425	330	130	60	18,7	2355	2475x2330x905
A6	-	425	330	130	60	21,0	2450	2475x2330x905
A3J3	-	425	340	130	60	21,9	2615	2475x2615x957
A4J3	-	425	340	130	60	25,7	2745	2475x2640x950





*) Theoretical lifting capacity
 *) Max lifting capacity

MODELS	LIFTING MOMENT	SLEWING ANGLE	WORKING PRESSURE	OIL TANK CAPACITY	MAX OIL FLOW	MAX. VERTICAL REACH (HYDR.)	CRANE WEIGHT (STAB. STANDARD)	DIMENSIONS
	tm	°	bar	l	l/min	m	kg	mm BxhxS
A2	18,9	415	315	130	70	11,9	2305	2520x2300x930
A3	-	415	315	130	70	13,9	2455	2520x2300x930
A4	-	415	315	130	70	16,1	2600	2520x2300x930
A5	-	415	315	130	70	18,2	2715	2520x2300x930



7213C

A2					
	1.00	2.37	4.30	6.27	8.24
m	19800*	8000*	4605	3095	2335
kg					

A3									
	1.00	2.24	4.30	6.27	8.24	10.31	12.46	14.68	16.96
m	18750*	8000*	4360	2860	2130	1675	1115	940	725
kg									

A4										
	1.00	2.16	4.38	6.35	8.32	10.39	12.46	14.67	16.96	19.06
m	18160*	8000*	4145	2705	1970	1530	1260	940	725	600
kg										

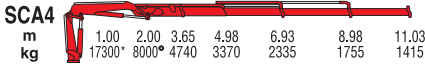
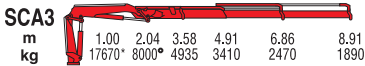
A5										
	1.00	2.09	4.46	6.43	8.40	10.47	12.54	14.67	16.96	19.06
m	17570*	8000*	3940	2540	1825	1390	1120	945	725	600
kg										

A6										
	1.00	2.04	4.55	6.52	8.49	10.56	12.63	14.76	16.96	19.06
m	17220*	8000*	3745	2420	1820	1350	1050	845	730	600
kg										

*) Theoretical lifting capacity

●) Max lifting capacity

7213C



7213SC

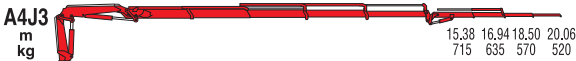
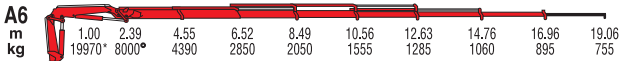
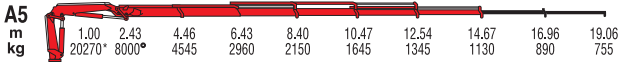
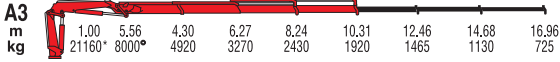
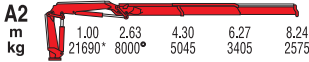
Short boom

*) Theoretical lifting capacity

*) Max lifting capacity

MODELS	LIFTING MOMENT	SLEWING ANGLE	WORKING PRESSURE	OIL TANK CAPACITY	MAX OIL FLOW	MAX. VERTICAL REACH (HYDR.)	CRANE WEIGHT (STAB. STANDARD)	DIMENSIONS
	tm	°	bar	l	l/min	m	kg	mm BxhxS
A2	19,8	415	320	130	70	12,0	2475	2520x2300x930
A3	-	415	310	130	70	14,1	2625	2520x2300x930
A4	-	415	310	130	70	16,2	2775	2520x2300x930
A5	-	415	310	130	70	18,4	2895	2520x2300x930
A6	-	415	310	130	70	20,7	2990	2520x2300x930
A3J3	-	415	-	130	70	22,2	3285	2520x2695x1050
A4J3	-	415	-	130	70	23,8	3265	2520x2600x1050
A5J2	-	415	-	130	70	23,9	3170	2520x2600x1050
SC A2	18,7	415	300	130	70	10,5	2530	2520x2300x870
SC A3	-	415	300	130	70	12,7	2670	2520x2300x870
SC A4	-	415	300	130	70	14,8	2810	2520x2300x870



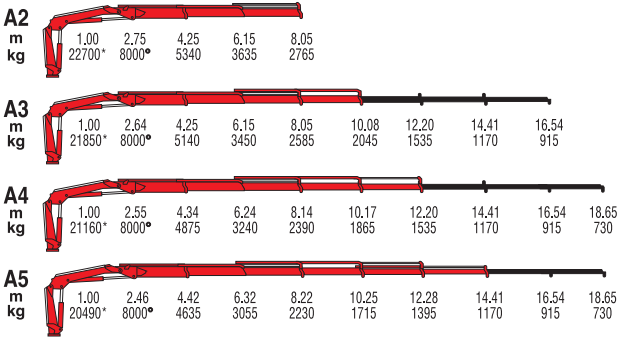


*) Theoretical lifting capacity
 *) Max lifting capacity

MODELS	LIFTING MOMENT	SLEWING ANGLE	WORKING PRESSURE	OIL TANK CAPACITY	MAX OIL FLOW	MAX. VERTICAL REACH (HYDR.)	CRANE WEIGHT (STAB. STANDARD)	DIMENSIONS
	tm	°	bar	l	l/min	m	kg	mm BxhxS
A2	21,7	415	345	130	70	12,0	2475	2520x2300x930
A3	-	415	345	130	70	14,1	2625	2520x2300x930
A4	-	415	345	130	70	16,2	2775	2520x2300x930
A5	-	415	345	130	70	18,4	2895	2520x2300x930
A6	-	415	345	130	70	20,7	2990	2520x2300x930
A3J3	-	415	-	130	70	22,2	3285	2520x2695x1050
A4J3	-	415	-	130	70	23,8	3265	2520x2600x1050
A5J2	-	415	-	130	70	23,9	3170	2520x2550x1050



7240B



*) Theoretical lifting capacity
 •) Max lifting capacity

MODELS	LIFTING MOMENT	SLEWING ANGLE	WORKING PRESSURE	OIL TANK CAPACITY	MAX OIL FLOW	MAX. VERTICAL REACH (HYDR.)	CRANE WEIGHT (STAB. STANDARD)	DIMENSIONS
	tm	°	bar	l	l/min	m	kg	mm BxhxS
A2	22,7	415	320	130	80	11,9	2485	2520x2300x930
A3	-	415	320	130	80	13,9	2640	2520x2300x930
A4	-	415	320	130	80	16,0	2790	2520x2300x930
A5	-	415	320	130	80	18,2	2910	2520x2300x930



7243C

A2					
	1.00	2.73	4.23	6.16	8.03
m					
kg	22520*	8000°	5325	3620	2745

A3										
	1.00	2.68	4.23	6.13	8.03	10.06	12.17	14.39	16.60	
m										
kg	22140*	8000°	5235	3520	2640	2090	1600	1240	1000	

A4											
	1.00	2.57	4.31	6.21	8.11	10.14	12.17	14.39	16.60	18.85	
m											
kg	21290*	8000°	4940	3295	2435	1900	1540	1240	1000	750	

A5												
	1.00	2.46	4.39	6.29	8.19	10.22	12.25	14.38	16.60	18.85	21.13	
m												
kg	20460*	8000°	4660	3075	2245	1725	1405	1180	1000	750	570	

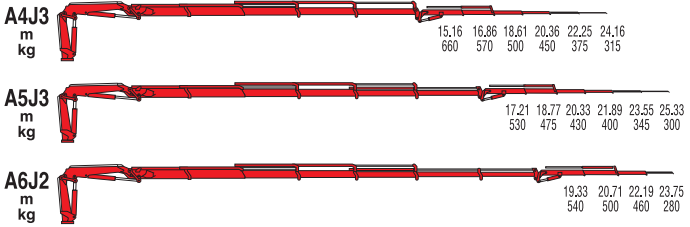
A6												
	1.00	2.41	4.48	6.38	8.28	10.31	12.34	14.47	16.60	18.85	21.13	
m												
kg	20050*	8000°	4475	2930	2115	1600	1280	1055	905	750	570	

A7													
	1.00	2.35	4.56	6.46	8.36	10.39	12.42	14.55	16.68	18.85	21.13	23.23	
m													
kg	19680*	8000°	4315	2800	1995	1485	1160	940	795	695	570	450	

A8													
	1.00	2.31	4.65	6.55	8.45	10.48	12.51	14.64	16.77	18.93	21.13	23.23	
m													
kg	19390*	8000°	4170	2690	1900	1395	1070	850	705	605	535	450	

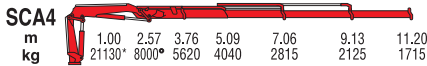
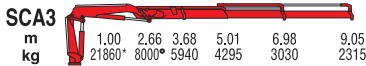
*) Theoretical lifting capacity
 °) Max lifting capacity

7243C



7243SC

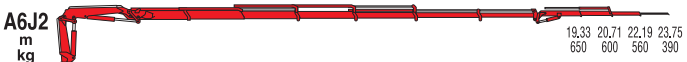
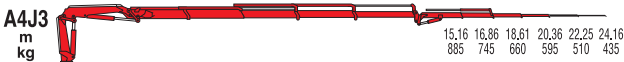
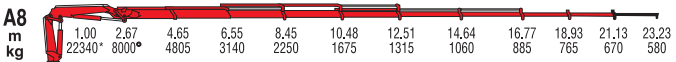
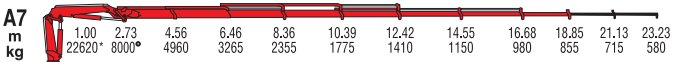
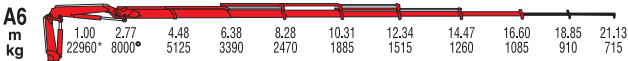
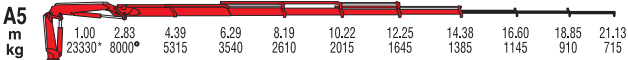
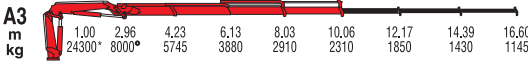
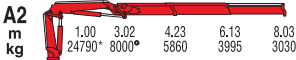
Short boom



*) Theoretical lifting capacity
 ●) Max lifting capacity

MODELS	LIFTING MOMENT	SLEWING ANGLE	WORKING PRESSURE	OIL TANK CAPACITY	MAX OIL FLOW	MAX. VERTICAL REACH (HYDR.)	CRANE WEIGHT (STAB. STANDARD)	DIMENSIONS
	tm	°	bar	l	l/min	m	kg	mm BxhxS
A2	22,5	415	315	130	80	11,7	2600	2520x2300x935
A3	-	415	310	130	80	13,8	2740	2520x2300x935
A4	-	415	310	130	80	15,9	2880	2520x2300x935
A5	-	415	310	130	80	18,1	3005	2520x2300x935
A6	-	415	310	130	80	20,3	3110	2520x2300x935
A7	-	415	310	130	80	22,5	3230	2520x2300x1005
A6	-	415	310	130	80	24,8	3320	2520x2300x1005
A4J3	-	415	325	130	80	24,1	3540	2520x2715x1055
A5J3	-	415	330	130	80	25,6	3495	2520x2615x1055
A6J2	-	415	325	130	80	25,9	3385	2520x2605x1055
SC A2	22,7	415	320	130	80	10,7	2530	2520x2300x930
SC A3	-	415	320	130	80	12,8	2670	2520x2300x930
SC A4	-	415	320	130	80	14,9	2810	2520x2300x930





*) Theoretical lifting capacity
 *) Max lifting capacity

MODELS	LIFTING MOMENT	SWAYING ANGLE	WORKING PRESSURE	OIL TANK CAPACITY	MAX OIL FLOW	MAX. VERTICAL REACH (HYDR.)	CRANE WEIGHT (STAB. STANDARD)	DIMENSIONS
	tm	°	bar	l	l/min	m	kg	mm BxhxS
A2	24,8	415	345	130	80	11,7	2600	2520x2300x935
A3	-	415	345	130	80	13,8	2740	2520x2300x935
A4	-	415	345	130	80	15,9	2880	2520x2300x935
A5	-	415	345	130	80	18,1	3005	2520x2300x935
A6	-	415	345	130	80	20,3	3110	2520x2300x935
A7	-	415	345	130	80	22,5	3230	2520x2300x1005
A8	-	415	345	130	80	24,8	3320	2520x2300x1005
A4J3	-	415	355	130	80	24,1	3540	2520x2715x1055
A5J3	-	415	350	130	80	25,6	3495	2520x2615x1055
A6J2	-	415	350	130	80	25,9	3385	2520x2605x1055



7401C



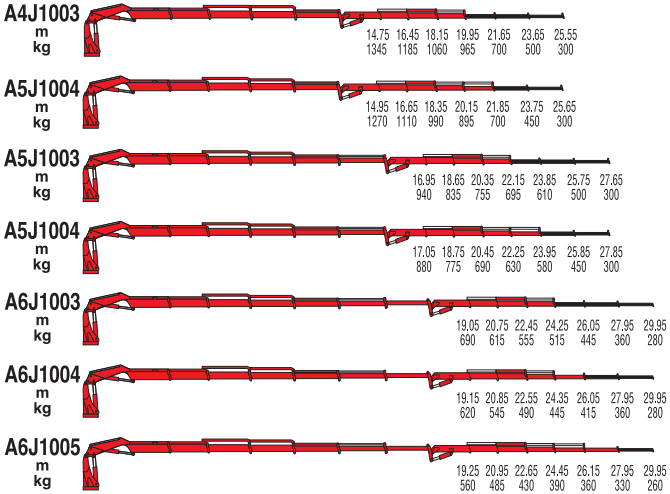
RADIOCONTROL

Model	1.00	2.91	4.40	6.07	7.97	10.05	12.10	14.25	16.35						
A2	1.00	2.91	4.40	6.07	7.97	10.05	12.10	14.25	16.35						
m	34740	11500*	7895	5695	4325	3255	2525	1965	1550						
kg															
A3	1.00	2.84	4.45	6.15	8.05	10.05	12.10	14.25	16.35	18.67					
m	33950	11500*	7630	5440	4095	3255	2525	1965	1550	1205					
kg															
A4	1.00	2.78	4.50	6.17	8.10	10.10	12.10	14.25	16.35	18.67	20.85				
m	33300	11500*	7400	5230	3880	3055	2525	1965	1550	1205	940				
kg															
A5	1.00	2.70	4.58	6.25	8.15	10.15	12.15	14.25	16.35	18.67	20.85	22.95			
m	32540	11500*	7105	4995	3670	2840	2320	1965	1550	1205	940	800			
kg															
A6	1.00	2.64	4.58	6.25	8.15	10.15	12.15	14.25	16.35	18.67	20.85	22.95	25.05		
m	31900	11500*	6965	4835	3510	2680	2155	1790	1550	1205	940	800	470		
kg															
A7	1.00	2.59	4.75	6.45	8.35	10.35	12.35	14.45	16.55	18.67	20.85	22.95	25.05		
m	31420	11500*	6615	4585	3295	2490	1975	1625	1375	1205	940	800	470		
kg															
A8	1.00	5.52	4.75	6.45	8.35	10.35	12.35	14.45	16.55	18.70	20.85	22.95	25.05		
m	30990	11500*	6525	4450	3155	2350	1835	1475	1230	1060	940	800	470		
kg															

*) Theoretical lifting capacity

•) Max lifting capacity

7401C

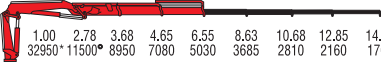
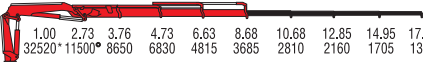
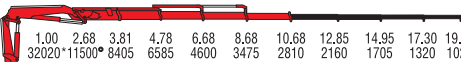
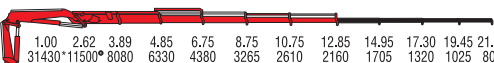
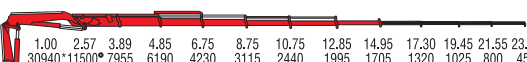
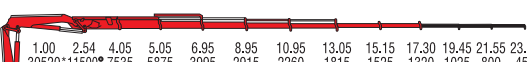
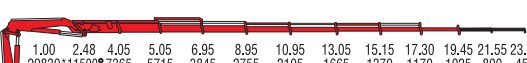
**RADIOCONTROL**

MODELS	LIFTING MOMENT tm	SLEWING ANGLE °	WORKING PRESSURE bar	OIL TANK CAPACITY l	MAX OIL FLOW l/min	MAX. VERTICAL REACH (HYDR.) m	CRANE WEIGHT (STAB. STANDARD) kg	DIMENSIONS mm BxhxS
A2	34,8	430	325	230	100	12,0	3850	2500x2440x1220
A3	-	430	325	230	100	14,0	4080	2500x2440x1250
A4	-	430	325	230	100	16,0	4300	2500x2440x1250
A5	-	430	325	230	100	18,0	4510	2500x2440x1250
A6	-	430	325	230	100	20,3	4700	2500x2440x1250
A7	-	430	325	230	100	22,6	4880	2500x2440x1350
A8	-	430	325	230	100	24,8	5050	2500x2440x1350
A4J1003	-	430	-	230	100	24,3	4920	2500x2740x1330
A4J1004	-	430	-	230	100	26,1	4990	2500x2740x1330
A5J1003	-	430	-	230	100	26,4	5130	2500x2720x1330
A5J1004	-	430	345	230	100	28,2	5200	2500x2720x1330
A6J1003	-	430	-	230	100	28,5	5320	2510x2740x1330
A6J1004	-	430	-	230	100	30,4	5390	2510x2740x1330
A6J1005	-	430	-	230	100	32,3	5450	2510x2740x1330



7401SC



SCA2		1.00	2.78	3.68	4.65	6.55	8.63	10.68	12.85	14.95				
m														
kg		32950*	11500*	8950	7080	5030	3685	2810	2160	1705				
SCA3		1.00	2.73	3.76	4.73	6.63	8.68	10.68	12.85	14.95	17.30			
m														
kg		32520*	11500*	8650	6830	4815	3685	2810	2160	1705	1320			
SCA4		1.00	2.68	3.81	4.78	6.68	8.68	10.68	12.85	14.95	17.30	19.45		
m														
kg		32020*	11500*	8405	6585	4600	3475	2810	2160	1705	1320	1025		
SCA5		1.00	2.62	3.89	4.85	6.75	8.75	10.75	12.85	14.95	17.30	19.45	21.55	
m														
kg		31430*	11500*	8080	6330	4380	3265	2610	2160	1705	1320	1025	800	
SCA6		1.00	2.57	3.89	4.85	6.75	8.75	10.75	12.85	14.95	17.30	19.45	21.55	23.65
m														
kg		30940*	11500*	7955	6190	4230	3115	2440	1995	1705	1320	1025	800	450
SCA7		1.00	2.54	4.05	5.05	6.95	8.95	10.95	13.05	15.15	17.30	19.45	21.55	23.65
m														
kg		30520*	11500*	7535	5875	3995	2915	2260	1815	1525	1320	1025	800	450
SCA8		1.00	2.48	4.05	5.05	6.95	8.95	10.95	13.05	15.15	17.30	19.45	21.55	23.65
m														
kg		29830*	11500*	7365	5715	3845	2755	2105	1665	1370	1170	1025	800	450

*) Theoretical lifting capacity

•) Max lifting capacity

MODELS	LIFTING MOMENT	SLEWING ANGLE	WORKING PRESSURE	OIL TANK CAPACITY	MAX OIL FLOW	MAX. VERTICAL REACH (HYDR.)	CRANE WEIGHT (STAB. STANDARD)	DIMENSIONS
	tm	°	bar	l	l/min	m	kg	mm BxhxS
SC A2	32,9	430	325	230	100	10,6	3750	2500x2440x1195
SC A3	-	430	325	230	100	12,7	3980	2500x2440x1195
SC A4	-	430	325	230	100	14,8	4200	2500x2440x1240
SC A5	-	430	325	230	100	16,9	4410	2500x2440x1240
SC A6	-	430	325	230	100	19,0	4600	2500x2440x1240
SC A7	-	430	325	230	100	21,3	4780	2500x2440x1350
SC A8	-	430	325	230	100	23,5	4950	2500x2440x1350



7441C



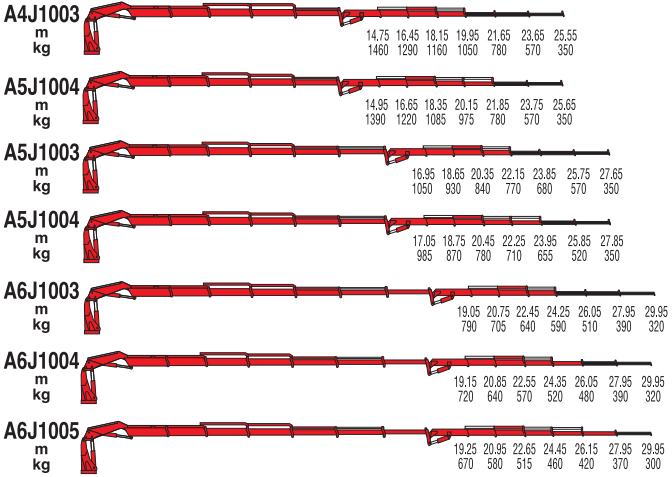
A2		1.00	3.17	4.40	6.07	7.97	10.05	12.10	14.25	16.35				
m														
kg		37620*	11500*	8550	6170	4680	3495	2725	2130	1695				
A3		1.00	3.06	4.45	6.15	8.05	10.05	12.10	14.25	16.35	18.67			
m														
kg		35670*	11500*	8170	5835	4385	3495	2725	2130	1695	1330			
A4		1.00	2.98	4.50	6.17	8.10	10.10	12.10	14.25	16.35	18.67	20.85		
m														
kg		35570*	11500*	7905	5605	4175	3285	2725	2130	1695	1330	1055		
A5		1.00	2.92	4.58	6.25	8.15	10.15	12.15	14.25	16.35	18.67	20.85	22.95	25.05
m														
kg		34900*	11500*	7620	5370	3960	3080	2520	2130	1695	1330	1055	880	
A6		1.00	2.86	4.58	6.25	8.15	10.15	12.15	14.25	16.35	18.67	20.85	22.95	25.05
m														
kg		34210*	11500*	7470	5220	3795	2910	2345	1965	1695	1330	1055	880	550
A7		1.00	2.80	4.75	6.45	8.35	10.35	12.35	14.45	16.55	18.67	20.85	22.95	25.05
m														
kg		33730*	11500*	7100	4950	3580	2720	2170	1785	1520	1330	1055	880	550
A8		1.00	2.72	4.75	6.45	8.35	10.35	12.35	14.45	16.55	18.70	20.85	22.95	25.05
m														
kg		33110*	11500*	6970	4785	3440	2580	2025	1645	1375	1190	1055	880	550

*) Theoretical lifting capacity
 *) Max lifting capacity

7441C



RADIOCONTROL



MODELS	LIFTING MOMENT tm	SLEWING ANGLE °	WORKING PRESSURE bar	OIL TANK CAPACITY l	MAX OIL FLOW l/min	MAX. VERTICAL REACH (HYDR.) m	CRANE WEIGHT (STAB. STANDARD) kg	DIMENSIONS mm BxhxS
A2	37,7	430	345	230	100	12,0	3850	2500x2440x1220
A3	-	430	345	230	100	14,0	4080	2500x2440x1250
A4	-	430	345	230	100	16,0	4300	2500x2440x1250
A5	-	430	345	230	100	18,0	4510	2500x2440x1250
A6	-	430	345	230	100	20,3	4700	2500x2440x1250
A7	-	430	345	230	100	22,6	4880	2500x2440x1350
A8	-	430	345	230	100	24,8	5050	2500x2440x1350
A4J1003	-	430	-	230	100	24,3	4920	2500x2740x1330
A4J1004	-	430	-	230	100	26,1	4990	2500x2740x1330
A5J1003	-	430	-	230	100	26,4	5130	2500x2720x1330
A5J1004	-	430	345	230	100	28,2	5200	2500x2720x1330
A6J1003	-	430	-	230	100	28,5	5320	2510x2740x1330
A6J1004	-	430	-	230	100	30,4	5390	2510x2740x1330
A6J1005	-	430	-	230	100	32,3	5450	2510x2740x1330



700 Series

***Articulated with
double linkage***

730

734

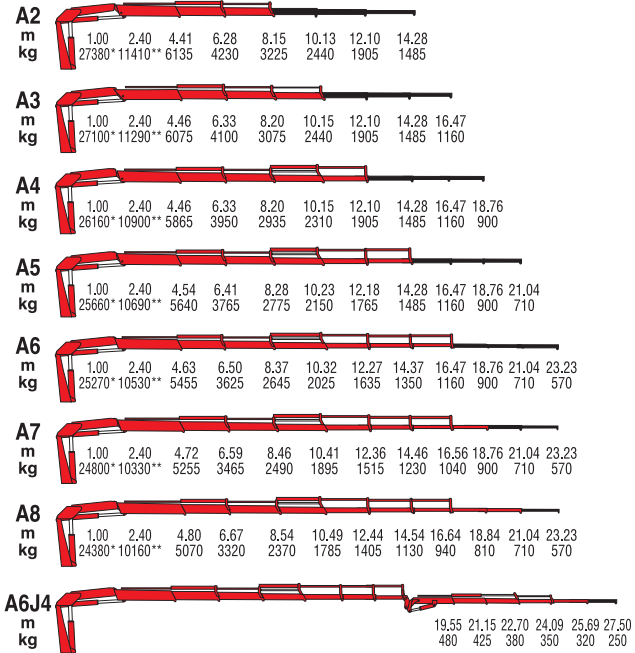
738R

745

746R

749R

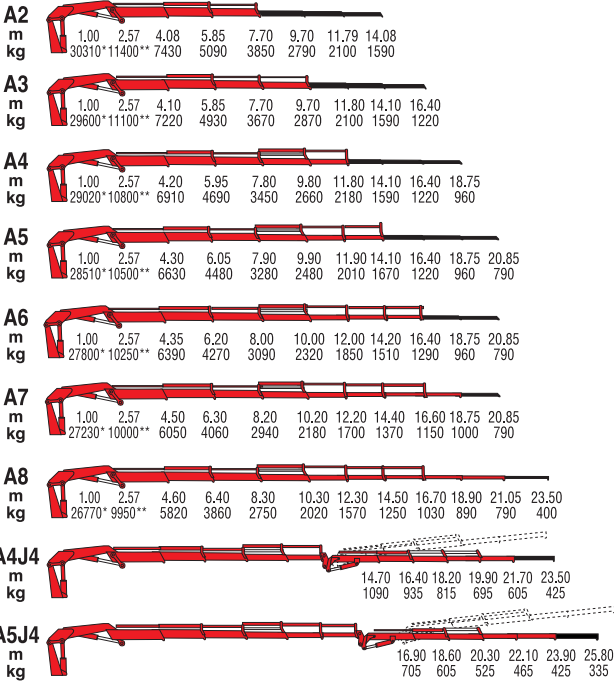




*) Theoretical lifting capacity
 **) Capacity at fixed hook (only if with load limiting device in EC area)

MODELS	LIFTING MOMENT	SLEWING ANGLE	WORKING PRESSURE	OIL TANK CAPACITY	MAX OIL FLOW	MAX. VERTICAL REACH (HYDR.)	CRANE WEIGHT (STAB. STANDARD)	DIMENSIONS
	tm	°	bar	l	l/min	m	kg	mm BxhxS
A2	27,4	425	325	180	80	11,90	3105	2510x2350x1010
A3	-	425	325	180	80	13,80	3265	2510x2350x1010
A4	-	425	325	180	80	15,80	3420	2510x2350x1010
A5	-	425	325	180	80	17,90	3560	2510x2350x1040
A6	-	425	325	180	80	20,10	3685	2510x2350x1060
A7	-	425	325	180	80	22,40	3800	2510x2350x1160
A8	-	425	325	180	80	24,70	3900	2510x2350x1180
A6J4	-	425	325	180	80	29,10	4260	2510x2705x1190

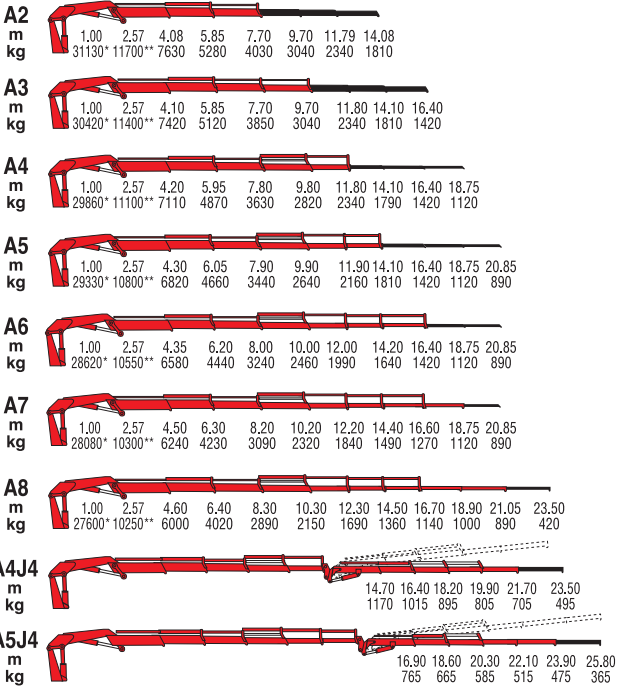




*) Theoretical lifting capacity
 **) Capacity at fixed hook (only if with load limiting device in EC area)

MODELS	LIFTING MOMENT	SLEWING ANGLE	WORKING PRESSURE	OIL TANK CAPACITY	MAX OIL FLOW	MAX. VERTICAL REACH (HYDR.)	CRANE WEIGHT (STAB. STANDARD)	DIMENSIONS
	tm	°	bar	l	l/min	m	kg	mm BxhxS
A2	30,3	397	300	160	45	11,80	3820	2070x2265x1170
A3	-	397	300	160	45	13,80	4040	2235x2265x1170
A4	-	397	300	160	45	15,80	4270	2325x2310x1170
A5	-	397	300	160	45	18,10	4440	2400x2360x1170
A6	-	397	300	160	45	20,40	4600	2480x2410x1170
A7	-	397	300	160	45	22,70	4720	2480x2485x1330
A8	-	397	300	160	45	25,00	4840	2535x2555x1330
A4J4	-	397	300	160	45	25,70	5110	2535x2620x1330
A5J4	-	397	300	160	45	28,00	5280	2545x2620x1330



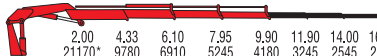

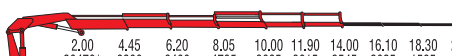
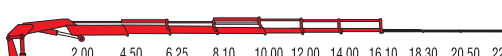






*) Theoretical lifting capacity
 **) Capacity at fixed hook (only if with load limiting device in EC area)

MODELS	LIFTING MOMENT	SLEWING ANGLE	WORKING PRESSURE	OIL TANK CAPACITY	MAX OIL FLOW	MAX. VERTICAL REACH (HYDR.)	CRANE WEIGHT (STAB. STANDARD)	DIMENSIONS
	tm	°	bar	l	l/min	m	kg	mm BxhxS
A2	31,3	397	310	160	45	11,80	3820	2070x2265x1170
A3	-	397	310	160	45	13,80	4040	2235x2265x1170
A4	-	397	310	160	45	15,80	4270	2325x2310x1170
A5	-	397	310	160	45	18,10	4440	2400x2360x1170
A6	-	397	310	160	45	20,40	4600	2480x2410x1170
A7	-	397	310	160	45	22,70	4720	2480x2485x1330
A8	-	397	310	160	45	25,00	4840	2535x2555x1330
A4J4	-	397	310	160	45	25,70	5110	2535x2620x1330
A5J4	-	397	310	160	45	28,00	5280	2545x2620x1330



A1		2.00	4.22	6.00										
m														
kg		22560*	10490	7520										
A2		2.00	4.22	6.00	7.85									
m														
kg		21710*	10235	7235	5515									
A3		2.00	4.33	6.10	7.95	9.90	11.90	14.00	16.10					
m														
kg		21170*	9780	6910	5245	4180	3245	2545	2025					
A4		2.00	4.45	6.20	8.05	10.00	11.90	14.00	16.10	18.30				
m														
kg		20880*	9385	6600	4960	3915	3245	2545	2025	1595				
A5		2.00	4.45	6.20	8.05	10.00	11.90	14.00	16.10	18.30	20.50			
m														
kg		20470*	9200	6400	4735	3685	3015	2545	2025	1595	1255			
A6		2.00	4.50	6.25	8.10	10.00	12.00	14.00	16.10	18.30	20.50	22.70		
m														
kg		20000*	8890	6145	4525	3480	2820	2345	2025	1595	1255	1000		
A7		2.00	4.50	6.25	8.10	10.00	12.00	14.00	16.10	18.30	20.50	22.70		
m														
kg		19610*	8715	5950	4330	3290	2620	2155	1830	1595	1255	1000		
A8		2.00	4.60	6.30	8.20	10.10	12.10	14.10	16.20	18.30	20.50	22.70		
m														
kg		19260*	8375	5705	4125	3110	2440	1960	1650	1415	1255	1000		

*) Theoretical lifting capacity

MODELS	LIFTING MOMENT	SLEWING ANGLE	WORKING PRESSURE	OIL TANK CAPACITY	MAX OIL FLOW	MAX. VERTICAL REACH (HYDR.)	CRANE WEIGHT (STAB. STANDARD)	DIMENSIONS
	tm	°	bar	l	l/min	m	kg	mm BxhxS
A1	45,1	400	300	210	50	10,20	4280	2505x2460x1250
A2	-	400	300	210	50	12,00	4540	2505x2460x1275
A3	-	400	300	210	50	14,10	4790	2505x2460x1275
A4	-	400	300	210	50	16,10	5070	2505x2460x1275
A5	-	400	300	210	50	18,20	5310	2505x2460x1285
A6	-	400	300	210	50	20,30	5510	2505x2460x1285
A7	-	400	300	210	50	22,50	5700	2505x2460x1400
A8	-	400	300	210	50	24,70	5880	2510x2480x1400





A2		2.00	4.22	6.00	7.85														
m																			
kg		21710*	10235	7235	5515														
A3		2.00	4.33	6.10	7.95	9.90	11.90	14.00	16.10										
m																			
kg		21170*	9780	6910	5245	4180	3245	2545	2025										
A4		2.00	4.45	6.20	8.05	10.00	11.90	14.00	16.10	18.30									
m																			
kg		20880*	9385	6600	4960	3915	3245	2545	2025	1595									
A5		2.00	4.45	6.20	8.05	10.00	11.90	14.00	16.10	18.30	20.50								
m																			
kg		20470*	9200	6400	4735	3685	3015	2545	2025	1595	1255								
A6		2.00	4.50	6.25	8.10	10.00	12.00	14.00	16.10	18.30	20.50	22.70							
m																			
kg		20000*	8890	6145	4525	3480	2820	2345	2025	1595	1255	1000							
A7		2.00	4.50	6.25	8.10	10.00	12.00	14.00	16.10	18.30	20.50	22.70							
m																			
kg		19610*	8715	5950	4330	3290	2620	2155	1830	1595	1255	1000							
A8		2.00	4.60	6.30	8.20	10.10	12.10	14.10	16.20	18.30	20.50	22.70							
m																			
kg		19260*	8375	5705	4125	3110	2440	1960	1650	1415	1255	1000							
A6J4													18.90	20.60	22.30	24.10	25.90	27.80	
m																			
kg													880	770	680	620	570	450	

*) Theoretical lifting capacity

MODELS	LIFTING MOMENT	SLEWING ANGLE	WORKING PRESSURE	OIL TANK CAPACITY	MAX OIL FLOW	MAX. VERTICAL REACH (HYDR.)	CRANE WEIGHT (STAB. STANDARD)	DIMENSIONS
	tm	°	bar	l	l/min	m	kg	mm BxhxS
A2	43,4	400	300	210	80	12,00	4540	2505x2460x1275
A3	-	400	300	210	80	14,10	4790	2505x2460x1275
A4	-	400	300	210	80	16,10	5070	2505x2460x1275
A5	-	400	300	210	80	18,20	5310	2505x2460x1285
A6	-	400	300	210	80	20,30	5510	2505x2460x1285
A7	-	400	300	210	80	22,50	5700	2505x2460x1400
A8	-	400	300	210	80	24,70	5880	2510x2480x1400
A6J4	-	400	300	210	80	30,10	6380	2515x2725x1470





A2		2.00	4.22	6.00	7.85													
m																		
kg		22370*	10450	7420	5700													
A3		2.00	4.33	6.10	8.00	9.90	11.90	14.00	16.10									
m																		
kg		21680*	9880	7100	5420	4370	3430	2720	2180									
A4		2.00	4.45	6.20	8.05	10.00	11.90	14.00	16.10	18.30								
m																		
kg		21180*	9520	6800	5150	4105	3430	2720	2180	1740								
A5		2.00	4.45	6.20	8.05	10.00	11.90	14.00	16.10	18.30	20.50							
m																		
kg		20740*	9320	6570	4920	3870	3180	2720	2180	1740	1380							
A6		2.00	4.50	6.25	8.10	10.00	12.00	14.00	16.10	18.30	20.50	22.70						
m																		
kg		20430*	9080	6340	4700	3660	2990	2505	2180	1740	1380	1060						
A7		2.00	4.50	6.25	8.10	10.00	12.00	14.00	16.10	18.30	20.50	22.70						
m																		
kg		20150*	8900	6120	4500	3450	2780	2300	1980	1740	1380	1060						
A8		2.00	4.60	6.30	8.20	10.10	12.10	14.10	16.20	18.30	20.50	22.70						
m																		
kg		19800*	8560	5890	4300	3270	2580	2105	1790	1550	1380	1060						
A6J4													18.90	20.60	22.30	24.10	25.90	27.80
m													985	860	770	708	655	485
kg																		

*) Theoretical lifting capacity

MODELS	LIFTING MOMENT	SLEWING ANGLE	WORKING PRESSURE	OIL TANK CAPACITY	MAX OIL FLOW	MAX. VERTICAL REACH (HYDR.)	CRANE WEIGHT (STAB. STANDARD)	DIMENSIONS
	tm	°	bar	l	l/min	m	kg	mm BxhxS
A2	44,7	400	320	210	80	12,00	4580	2505x2460x1275
A3	-	400	320	210	80	14,10	4830	2505x2460x1275
A4	-	400	320	210	80	16,10	5110	2505x2460x1275
A5	-	400	320	210	80	18,20	5350	2505x2460x1285
A6	-	400	320	210	80	20,30	5550	2505x2460x1285
A7	-	400	320	210	80	22,50	5740	2505x2460x1400
A8	-	400	320	210	80	24,70	5920	2510x2480x1400
A6J4	-	400	320	210	80	30,10	6420	2515x2725x1470



6000 Series

**Medium articulated
NO CE**

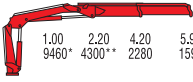
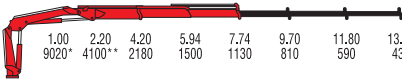
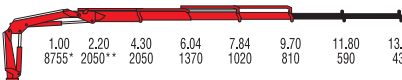
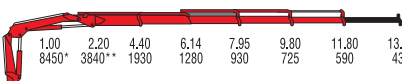
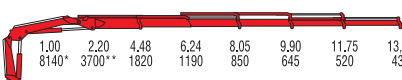
6108B

6148B

6238B

6248B



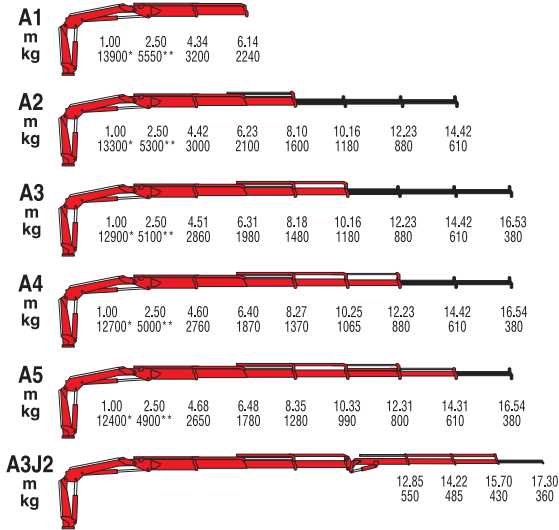
A1		1.00	2.20	4.20	5.94				
m		9460*	4300**	2280	1590				
kg									
A2		1.00	2.20	4.20	5.94	7.74	9.70	11.80	13.90
m		9020*	4100**	2180	1500	1130	810	590	435
kg									
A3		1.00	2.20	4.30	6.04	7.84	9.70	11.80	13.90
m		8755*	2050**	2050	1370	1020	810	590	435
kg									
A4		1.00	2.20	4.40	6.14	7.95	9.80	11.80	13.90
m		8450*	3840**	1930	1280	930	725	590	435
kg									
A5		1.00	2.20	4.48	6.24	8.05	9.90	11.75	13.75
m		8140*	3700**	1820	1190	850	645	520	435
kg									

*) Theoretical lifting capacity

**) Capacity at fixed hook (only if with load limiting device in EC area)

MODELS	LIFTING MOMENT	SLEWING ANGLE	WORKING PRESSURE	OIL TANK CAPACITY	MAX OIL FLOW	MAX. VERTICAL REACH (HYDR.)	CRANE WEIGHT (STAB. STANDARD)	DIMENSIONS
	tm	°	bar	l	l/min	m	kg	mm BxhxS
A1	9,6	395	290	60	25	9,45	1230	2475x2160x740
A2	-	395	290	60	25	11,30	1335	2475x2160x740
A3	-	395	290	60	25	13,20	1430	2475x2160x740
A4	-	395	290	60	25	15,30	1520	2475x2160x740
A5	-	395	290	60	25	17,30	1590	2475x2160x820



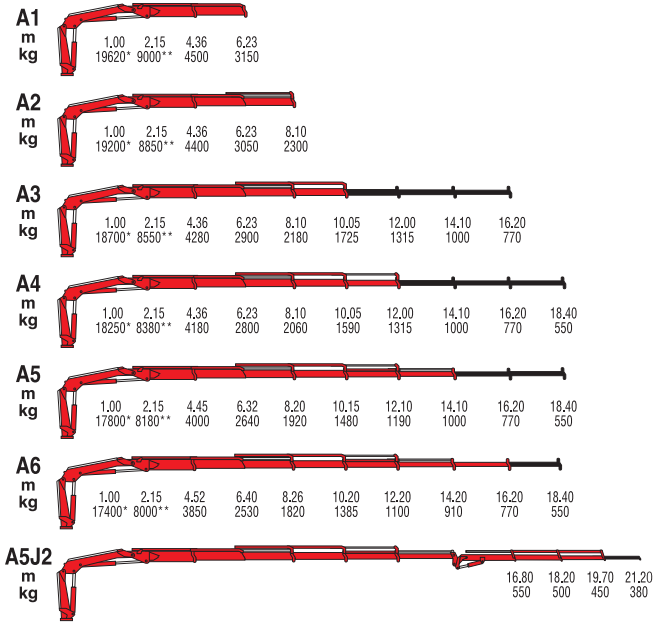


*) Theoretical lifting capacity

**) Capacity at fixed hook (only if with load limiting device in EC area)

MODELS	LIFTING MOMENT	SLEWING ANGLE	WORKING PRESSURE	OIL TANK CAPACITY	MAX OIL FLOW	MAX. VERTICAL REACH (HYDR.)	CRANE WEIGHT (STAB. STANDARD)	DIMENSIONS
	tm	°	bar	l	l/min	m	kg	mm BxhxS
A1	13,9	380	290	100	25	9,6	1680	2155x2340x855
A2	-	380	290	100	25	11,5	1810	2155x2340x855
A3	-	380	290	100	25	13,5	1930	2155x2340x855
A4	-	380	290	100	25	15,5	5030	2155x2340x855
A5	-	380	290	100	25	17,5	2120	2155x2340x855
A3J2	-	380	290	100	25	18,8	2240	2155x2340x855



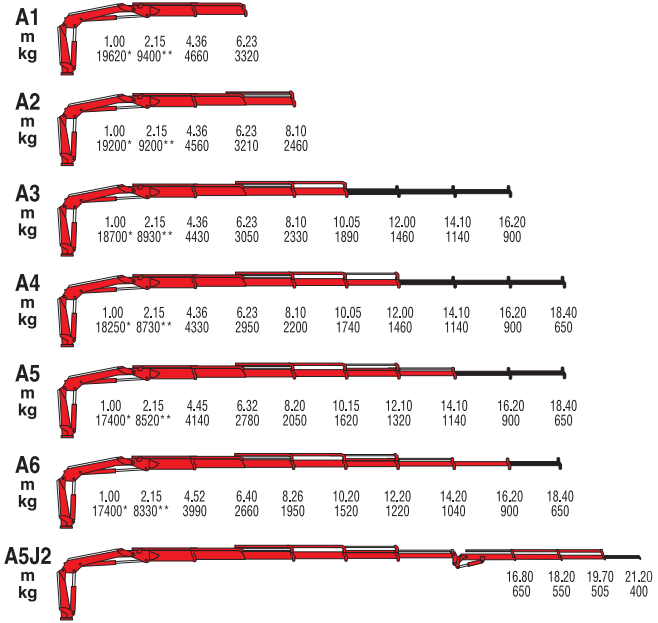


*) Theoretical lifting capacity

**) Capacity at fixed hook (only if with load limiting device in EC area)

MODELS	LIFTING MOMENT	SLEWING ANGLE	WORKING PRESSURE	OIL TANK CAPACITY	MAX OIL FLOW	MAX. VERTICAL REACH (HYDR.)	CRANE WEIGHT (STAB. STANDARD)	DIMENSIONS
	tm	°	bar	l	l/min	m	kg	mm BxhxS
A1	19,3	387	300	130	40	9,9	2280	2165x2295x970
A2	-	387	300	130	40	11,8	2430	2210x2295x970
A3	-	387	300	130	40	13,7	2570	2275x2295x1000
A4	-	387	300	130	40	15,7	2700	2370x2295x1000
A5	-	387	300	130	40	17,7	2800	2440x2295x1000
A6	-	387	300	130	40	19,8	2900	2495x2295x1000
A5J2	-	387	300	130	40	23,3	3135	2480x2300x1000





*) Theoretical lifting capacity
 **) Capacity at fixed hook (only if with load limiting device in EC area)

MODELS	LIFTING MOMENT	SLEWING ANGLE	WORKING PRESSURE	OIL TANK CAPACITY	MAX OIL FLOW	MAX. VERTICAL REACH (HYDR.)	CRANE WEIGHT (STAB. STANDARD)	DIMENSIONS
	tm	°	bar	l	l/min	m	kg	mm BxhxS
A1	20,7	387	315	130	40	9,9	2280	2165x2295x970
A2	-	387	315	130	40	11,8	2430	2210x2295x970
A3	-	387	315	130	40	13,7	2570	2275x2295x1000
A4	-	387	315	130	40	15,7	2700	2370x2295x1000
A5	-	387	315	130	40	17,7	2800	2440x2295x1000
A6	-	387	315	130	40	19,8	2900	2495x2295x1000
A5J2	-	387	315	130	40	23,3	3135	2480x2300x1000



8 **Series**

Basic articulated
NO CE

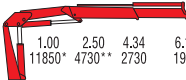
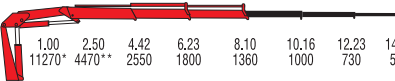
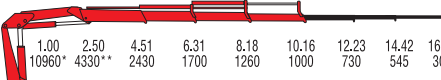
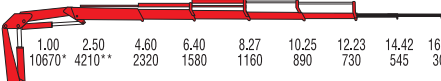
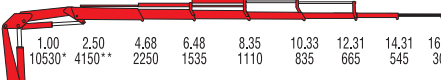

128

178

258

268

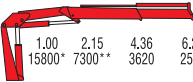
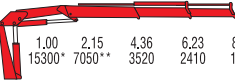
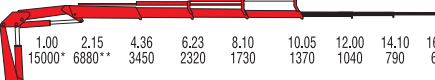






A1	
m	1.00 2.50 4.34 6.14
kg	11850* 4730** 2730 1910
A2	
m	1.00 2.50 4.42 6.23 8.10 10.16 12.23 14.42
kg	11270* 4470** 2550 1800 1360 1000 730 545
A3	
m	1.00 2.50 4.51 6.31 8.18 10.16 12.23 14.42 16.53
kg	10960* 4330** 2430 1700 1260 1000 730 545 300
A4	
m	1.00 2.50 4.60 6.40 8.27 10.25 12.23 14.42 16.54
kg	10670* 4210** 2320 1580 1160 890 730 545 300
A5	
m	1.00 2.50 4.68 6.48 8.35 10.33 12.31 14.31 16.54
kg	10530* 4150** 2250 1535 1110 835 665 545 300
A3J2	
m	
kg	12.85 14.22 15.70 17.30 450 395 350 280

*) Theoretical lifting capacity
 **) Capacity at fixed hook (only if with load limiting device in EC area)

MODELS	LIFTING MOMENT	SLEWING ANGLE	WORKING PRESSURE	OIL TANK CAPACITY	MAX OIL FLOW	MAX. VERTICAL REACH (HYDR.)	CRANE WEIGHT (STAB. STANDARD)	DIMENSIONS
	tm	°	bar	l	l/min	m	kg	mm BxhxS
A1	11,9	380	310	100	25	9,6	1545	2460x2340x855
A2	-	380	310	100	25	11,5	1665	2460x2340x855
A3	-	380	310	100	25	13,5	1770	2460x2340x855
A4	-	380	310	100	25	15,5	1865	2485x2340x855
A5	-	380	310	100	25	17,6	1955	2500x2340x940
A3J2	-	380	290	100	25	18,8	2080	2490x2340x1030


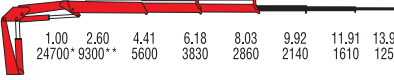
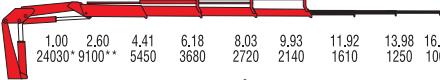
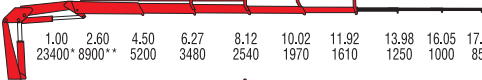
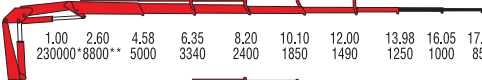
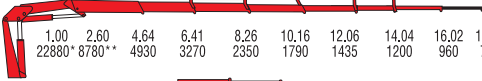




A1		1.00	2.15	4.36	6.23										
m															
kg		15800*	7300**	3620	2520										
A2		1.00	2.15	4.36	6.23	8.10									
m															
kg		15300*	7050**	3520	2410	1830									
A3		1.00	2.15	4.36	6.23	8.10	10.05	12.00	14.10	16.20					
m															
kg		15000*	6880**	3450	2320	1730	1370	1040	790	600					
A4		1.00	2.15	4.36	6.23	8.10	10.05	12.00	14.10	16.20	18.40				
m															
kg		14700*	6740**	3370	2220	1620	1260	1040	790	600	460				
A5		1.00	2.15	4.45	6.32	8.20	10.15	12.10	14.10	16.20	18.40				
m															
kg		14400*	6585**	3230	2100	1510	1160	935	790	600	460				
A6		1.00	2.15	4.52	6.40	8.26	10.20	12.20	14.20	16.20	18.40				
m															
kg		14000*	6430**	3100	2000	1420	1060	845	700	600	460				
A4J2												14.70	16.20	17.60	19.20
m												535	480	435	360
kg															

- *) Theoretical lifting capacity
 **) Capacity at fixed hook (only if with load limiting device in EC area)

MODELS	LIFTING MOMENT	SLEWING ANGLE	WORKING PRESSURE	OIL TANK CAPACITY	MAX OIL FLOW	MAX. VERTICAL REACH (HYDR.)	CRANE WEIGHT (STAB. STANDARD)	DIMENSIONS
	tm	°	bar	l	l/min	m	kg	mm BxhxS
A1	15,8	387	310	130	32	9,9	2130	2480x2295x970
A2	-	387	310	130	32	11,8	2270	2480x2295x970
A3	-	387	310	130	32	13,8	2390	2480x2295x1000
A4	-	387	310	130	32	15,7	2510	2485x2295x1000
A5	-	387	310	130	32	17,8	2620	2480x2295x1000
A6	-	387	310	130	32	19,8	2700	2495x2295x1000
A4J2	-	387	310	130	32	21,1	2820	2480x2295x1030



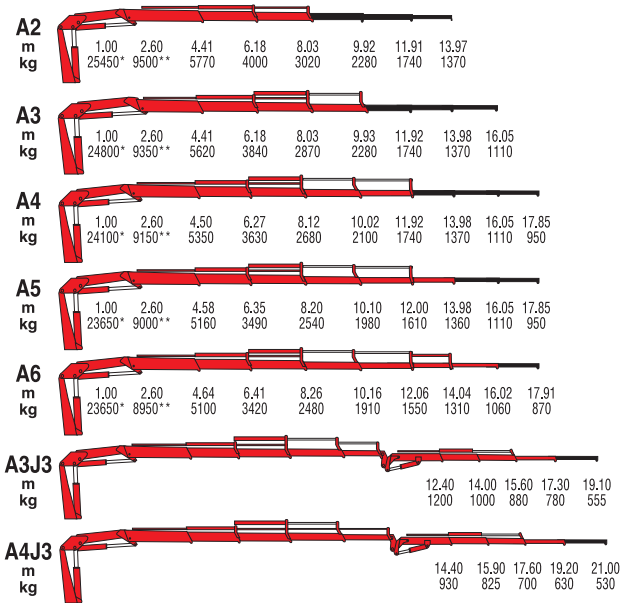
A1		1.00	2.60	4.40	6.17	8.03	9.92	11.92	14.00				
m		25000*	9400**	5700	4000	2860	2140	1610	1250				
kg													
A2		1.00	2.60	4.41	6.18	8.03	9.92	11.91	13.97				
m		24700*	9300**	5600	3830	2860	2140	1610	1250				
kg													
A3		1.00	2.60	4.41	6.18	8.03	9.93	11.92	13.98	16.05			
m		24030*	9100**	5450	3680	2720	2140	1610	1250	1000			
kg													
A4		1.00	2.60	4.50	6.27	8.12	10.02	11.92	13.98	16.05	17.85		
m		23400*	8900**	5200	3480	2540	1970	1610	1250	1000	850		
kg													
A5		1.00	2.60	4.58	6.35	8.20	10.10	12.00	13.98	16.05	17.85		
m		230000*	8800**	5000	3340	2400	1850	1490	1250	1000	850		
kg													
A6		1.00	2.60	4.64	6.41	8.26	10.16	12.06	14.04	16.02	17.91		
m		22880*	8780**	4930	3270	2350	1790	1435	1200	960	780		
kg													
A3J3									12.40	14.00	15.60	17.30	19.10
m									1100	920	800	700	500
kg													
A4J3									14.40	15.90	17.60	19.20	21.00
m									830	745	630	565	480
kg													

*) Theoretical lifting capacity

**) Capacity at fixed hook (only if with load limiting device in EC area)

MODELS	LIFTING MOMENT	SLEWING ANGLE	WORKING PRESSURE	OIL TANK CAPACITY	MAX OIL FLOW	MAX. VERTICAL REACH (HYDR.)	CRANE WEIGHT (STAB. STANDARD)	DIMENSIONS
	tm	°	bar	l	l/min	m	kg	
A1	25,0	400	290	160	50	9,8	3020	2500x2320x1115
A2	-	400	290	160	50	11,6	3200	2500x2320x1115
A3	-	400	290	160	50	13,4	3340	2500x2320x1115
A4	-	400	290	160	50	15,3	3500	2500x2320x1115
A5	-	400	290	160	50	17,3	3640	2500x2320x1115
A6	-	400	290	160	50	19,3	3735	2540x2320x1200
A3J3	-	400	290	160	50	20,2	3890	2500x2430x1300
A4J3	-	400	290	160	50	22,1	4040	2500x2445x1300





*) Theoretical lifting capacity
 **) Capacity at fixed hook (only if with load limiting device in EC area)

MODELS	LIFTING MOMENT	SLEWING ANGLE	WORKING PRESSURE	OIL TANK CAPACITY	MAX OIL FLOW	MAX. VERTICAL REACH (HYDR.)	CRANE WEIGHT (STAB. STANDARD)	DIMENSIONS
	tm	°	bar	l	l/min	m	kg	mm BxhxS
A2	25,4	400	305	160	50	11,6	3250	2500x2320x1115
A3	-	400	305	160	50	13,4	3390	2500x2320x1115
A4	-	400	305	160	50	15,3	3550	2500x2320x1115
A5	-	400	305	160	50	17,3	3690	2500x2320x1115
A6	-	400	305	160	50	19,3	3785	2540x2320x1200
A3J3	-	400	305	160	50	20,2	3940	2500x2430x1300
A4J3	-	400	305	160	50	22,1	4090	2500x2445x1300



NEW AGE

9000 Series

***Endless slewing
with double linkage***

9265C

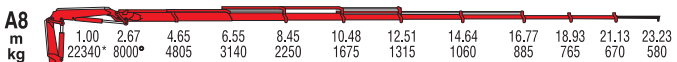
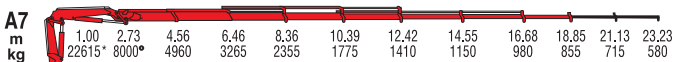
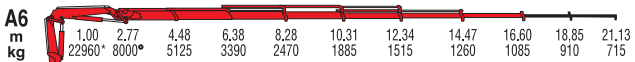
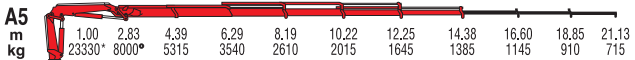
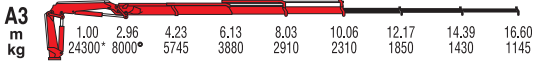
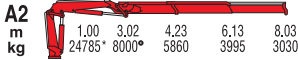
9405C

9445C

9601C

9661C





*) Theoretical lifting capacity
 ●) Max lifting capacity

MODELS	LIFTING MOMENT	SEWING ANGLE	WORKING PRESSURE	OIL TANK CAPACITY	MAX OIL FLOW	MAX. VERTICAL REACH (HYDR.)	CRANE WEIGHT (STAB. STANDARD)	DIMENSIONS
	tm	°	bar	l	l/min	m	kg	mm BxhxS
A2	24,8	Endless	345	130	80	11,7	2745	2530x2335x980
A3	-	Endless	345	130	80	13,8	2885	2530x2335x980
A4	-	Endless	345	130	80	15,9	3025	2530x2335x980
A5	-	Endless	345	130	80	18,1	3150	2530x2335x980
A6	-	Endless	345	130	80	20,3	3255	2530x2335x980
A7	-	Endless	345	130	80	22,5	3375	2530x2335x1055
A8	-	Endless	345	130	80	24,8	3465	2530x2335x1055
A4J3	-	Endless	355	130	80	24,1	3685	2550x2700x1100
A5J3	-	Endless	355	130	80	25,6	3640	2550x2595x1100
A6J2	-	Endless	350	130	80	25,9	3530	2540x2580x1100



9405C



A2															
m	1,00	2,91	4,40	6,07	7,97	10,05	12,10	14,25	16,35						
kg	34740*	11500*	7895	5695	4325	3255	2525	1965	1550						
A3															
m	1,00	2,84	4,45	6,15	8,05	10,05	12,10	14,25	16,35	18,67					
kg	33950*	11500*	7630	5440	4095	3255	2525	1965	1550	1205					
A4															
m	1,00	2,78	4,50	6,17	8,10	10,10	12,10	14,25	16,35	18,67	20,85				
kg	33300*	11500*	7400	5230	3880	3055	2525	1965	1550	1205	940				
A5															
m	1,00	2,70	4,58	6,25	8,15	10,15	12,15	14,25	16,35	18,67	20,85	22,95			
kg	32540*	11500*	7105	4995	3670	2840	2320	1965	1550	1205	940	800			
A6															
m	1,00	2,64	4,58	6,25	8,15	10,15	12,15	14,25	16,35	18,67	20,85	22,95	25,05		
kg	31900*	11500*	6965	4835	3510	2680	2155	1790	1550	1205	940	800	470		
A7															
m	1,00	2,59	4,75	6,45	8,35	10,35	12,35	14,45	16,55	18,67	20,85	22,95	25,05		
kg	31420*	11500*	6615	4585	3295	2490	1975	1625	1375	1205	940	800	470		
A8															
m	1,00	2,52	4,75	6,45	8,35	10,35	12,35	14,45	16,55	18,70	20,85	22,95	25,05		
kg	30990*	11500*	6525	4450	3155	2350	1835	1475	1230	1060	940	800	470		

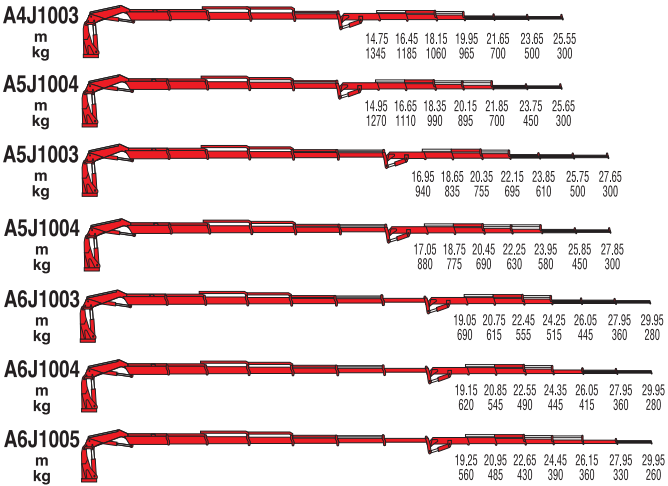
*) Theoretical lifting capacity

●) Max lifting capacity

9405C



RADIOCONTROL



MODELS	LIFTING MOMENT tm	SLEWING ANGLE °	WORKING PRESSURE bar	OIL TANK CAPACITY l	MAX OIL FLOW l/min	MAX. VERTICAL REACH (HYDR.) m	CRANE WEIGHT (STAB. STANDARD) kg	DIMENSIONS mm BxhxS
A2	34,8	430	325	230	100	12,0	3850	2500x2440x1220
A3	-	430	325	230	100	14,0	4080	2500x2440x1250
A4	-	430	325	230	100	16,0	4300	2500x2440x1250
A5	-	430	325	230	100	18,0	4510	2500x2440x1250
A6	-	430	325	230	100	20,3	4700	2500x2440x1250
A7	-	430	325	230	100	22,6	4880	2500x2440x1350
A8	-	430	325	230	100	24,8	5050	2500x2440x1350
A4J1003	-	430	-	230	100	24,3	4920	2500x2740x1330
A4J1004	-	430	-	230	100	26,1	4990	2500x2740x1330
A5J1003	-	430	-	230	100	26,4	5130	2500x2720x1330
A5J1004	-	430	345	230	100	28,2	5200	2500x2720x1330
A6J1003	-	430	-	230	100	28,5	5320	2510x2740x1330
A6J1004	-	430	-	230	100	30,4	5390	2510x2740x1330
A6J1005	-	430	-	230	100	32,3	5450	2510x2740x1330

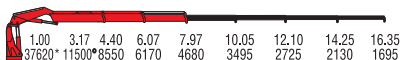


9445C

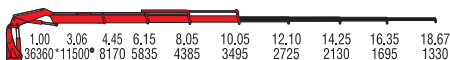


RADIOCONTROL

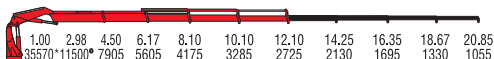
A2
m
kg



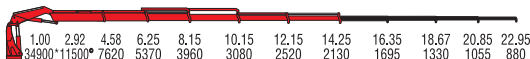
A3
m
kg



A4
m
kg



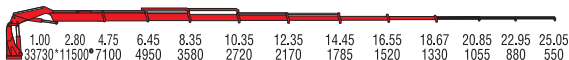
A5
m
kg



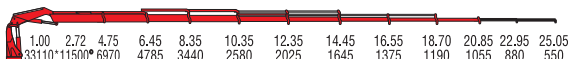
A6
m
kg



A7
m
kg

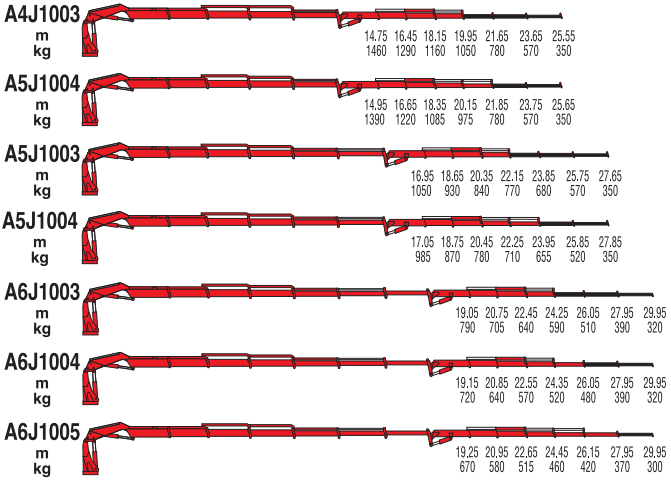


A8
m
kg



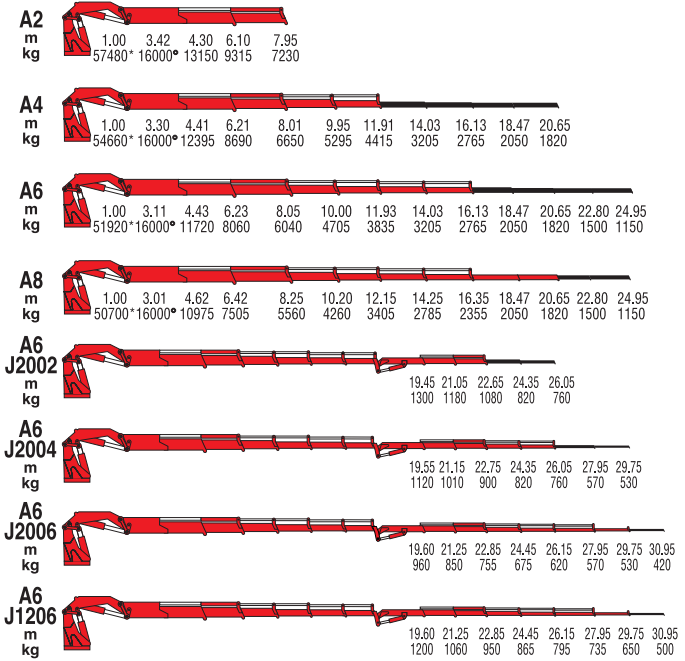
*) Theoretical lifting capacity

●) Max lifting capacity



MODELS	LIFTING MOMENT tm	SLEWING ANGLE °	WORKING PRESSURE bar	OIL TANK CAPACITY l	MAX OIL FLOW l/min	MAX. VERTICAL REACH (HYDR.) m	CRANE WEIGHT (STAB. STANDARD) kg	DIMENSIONS mm BxhxS
A2	37,7	430	345	230	100	12,0	3850	2500x2440x1220
A3	-	430	345	230	100	14,0	4080	2500x2440x1250
A4	-	430	345	230	100	16,0	4300	2500x2440x1250
A5	-	430	345	230	100	18,0	4510	2500x2440x1250
A6	-	430	345	230	100	20,3	4700	2500x2440x1250
A7	-	430	345	230	100	22,6	4880	2500x2440x1350
A8	-	430	345	230	100	24,8	5050	2500x2440x1350
A4J1003	-	430	-	230	100	24,3	4920	2500x2740x1330
A4J1004	-	430	-	230	100	26,1	4990	2500x2740x1330
A5J1003	-	430	-	230	100	26,4	5130	2500x2720x1330
A5J1004	-	430	345	230	100	28,2	5200	2500x2720x1330
A6J1003	-	430	-	230	100	28,5	5320	2510x2740x1330
A6J1004	-	430	-	230	100	30,4	5390	2510x2740x1330
A6J1005	-	430	-	230	100	32,3	5450	2510x2740x1330





*) Theoretical lifting capacity
 •) Max lifting capacity

MODELS	LIFTING MOMENT	SLEWING ANGLE	WORKING PRESSURE	OIL TANK CAPACITY	MAX OIL FLOW	MAX. VERTICAL REACH (HYDR.)	CRANE WEIGHT (STAB. STANDARD)	DIMENSIONS
	tm	°	bar	l	l/min	m	kg	mm BxhxS
A2	57,5	Endless	335	250	100	11,9	5375	2530x2430x1480
A4	-	Endless	335	250	100	15,9	5940	2530x2430x1480
A6	-	Endless	335	250	100	20,3	6465	2530x2430x1480
A8	-	Endless	335	300	100	24,7	6875	2550x2430x1635
A6J2002	-	Endless	-	250/300	100	26,6	7570	2550x2740x1665
A6J2004	-	Endless	-	250/300	100	30,1	7785	2550x2740x1665
A6J2006	-	Endless	-	250/300	100	33,8	7955	2550x2740x1665
A6J1206	-	Endless	-	250/300	100	33,8	7655	2550x2780x1665





A2		1.00	3.80	4.30	6.10	7.95																
m		63240*	16000*	14435	10250	7955																
kg																						
A4		1.00	3.67	4.41	6.21	8.01	9.95	11.91	14.03	16.13	18.47	20.65										
m		62200*	16000*	13650	9615	7370	5885	4920	3625	3135	2370	2115										
kg																						
A6		1.00	3.48	4.43	6.23	8.05	10.00	11.93	14.03	16.13	18.47	20.65	22.80	24.95								
m		57570*	16000*	12995	8980	6760	5290	4330	3625	3135	2370	2115	1700	1345								
kg																						
A8		1.00	3.38	4.62	6.42	8.25	10.20	12.15	14.25	16.35	18.47	20.65	22.80	24.95								
m		56270*	16000*	12180	8390	6265	4830	3895	3205	2720	2370	2115	1700	1345								
kg																						
A6															19.45	21.05	22.65	24.35	26.05			
J2002															1520	1380	1270	860	790			
m																						
kg																						
A6															19.55	21.15	22.75	24.35	26.05	27.95	29.75	
J2004															1330	1180	1080	990	910	730	680	
m																						
kg																						
A6															19.60	21.25	22.85	24.45	26.15	27.95	29.75	30.95
J2006															1200	1070	960	860	790	730	680	520
m																						
kg																						
A6															19.60	21.25	22.85	24.45	26.15	27.95	29.75	30.95
J1206															1490	1320	1200	1100	1020	940	860	650
m																						
kg																						

*) Theoretical lifting capacity

•) Max lifting capacity

MODELS	LIFTING MOMENT	SLEWING ANGLE	WORKING PRESSURE	OIL TANK CAPACITY	MAX OIL FLOW	MAX. VERTICAL REACH (HYDR.)	CRANE WEIGHT (STAB. STANDARD)	DIMENSIONS
	tm	°	bar	l	l/min	m	kg	mm BxhxS
A2	63,2	Endless	365	250	100	11,9	5375	2530x2430x1480
A4	-	Endless	365	250	100	15,9	5940	2530x2430x1480
A6	-	Endless	365	250	100	20,3	6465	2530x2430x1480
A8	-	Endless	365	300	100	24,7	6875	2550x2430x1635
A6J2002	-	Endless	-	250/300	100	26,6	7570	2550x2740x1665
A6J2004	-	Endless	-	250/300	100	30,1	7785	2550x2740x1665
A6J2006	-	Endless	-	250/300	100	33,8	7955	2550x2740x1665
A6J1206	-	Endless	-	250/300	100	33,8	7655	2550x2780x1665



900 Series

***Endless slewing
with double linkage***

990R





990R



A2

m	3.00	4.15	5.85	7.65
kg	24660*	17510	12610	9670

A4

m	3.00	4.22	5.95	7.75	9.65	11.55
kg	23430*	16635	11815	8930	7080	5870

A6

m	3.00	4.37	6.10	7.87	9.80	11.70	13.70	15.70	17.70	19.70	22.10
kg	22570*	15495	10975	8250	6410	5240	4410	3820	2905	2590	1940

A8

m	3.00	4.37	6.10	7.87	9.80	11.70	13.70	15.70	17.70	19.70	22.10	24.25	26.60
kg	21970*	15085	10515	7745	5960	4810	3945	3340	2905	2590	1940	1755	1355

A10

m	3.00	4.65	6.35	8.15	10.10	11.95	13.95	15.95	17.95	19.95	22.10	24.25	26.60
kg	21770*	14045	9800	7185	5450	4335	3525	2935	2500	2195	1940	1755	1305

A6J6

m	18.90	20.50	22.15	23.80	25.50	27.30	29.10	31.10
kg	1705	1505	1365	1240	1130	1040	920	630

A8J4

m	22.40	24.10	25.85	27.60	29.40	31.30
kg	950	850	775	710	660	550

*) Theoretical lifting capacity

MODELS	LIFTING MOMENT	SWINGING ANGLE	WORKING PRESSURE	OIL TANK CAPACITY	MAX OIL FLOW	MAX. VERTICAL REACH (HYDR.)	CRANE WEIGHT (STAB. STANDARD)	DIMENSIONS
	tm	°	bar	l	l/min	m	kg	mm BxhxS
A2	74	Endless	315	280	100	12,10	7450	2530x2450x1550
A4	-	Endless	315	280	100	16,00	8100	2530x2450x1550
A6	-	Endless	315	280	100	20,10	8700	2530x2450x1710
A8	-	Endless	315	280	100	24,20	9250	2530x2505x1735
A10	-	Endless	315	280	100	28,80	9650	2530x2635x1735
A6J6	-	Endless	315	280	100	33,50	10200	2530x2800x1840
A8J4	-	Endless	315	280	100	33,80	10100	2545x2875x1840



NEW AGE

7000D
Series

Telescopic boom

7162D

7212D

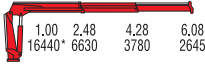
7240D



7000D

7162D A2

m
kg



7162DA3

m
kg



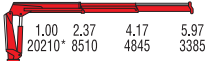
7162D A4

m
kg



7212D A2

m
kg



7212DA3

m
kg



7212D A4

m
kg



7212D A5

m
kg



7240D A2

m
kg



7240DA3

m
kg



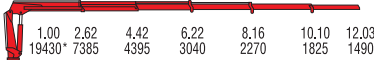
7240D A4

m
kg



7240D A5

m
kg



*) Theoretical lifting capacity

MODELS	LIFTING MOMENT	SLEWING ANGLE	WORKING PRESSURE	OIL TANK CAPACITY	MAX OIL FLOW	MAX. VERTICAL REACH (HYDR.)	CRANE WEIGHT (STAB. STANDARD)	DIMENSIONS
	tm	°	bar	l	l/min	m	kg	mm BxhxS
7162D A2	16,4	425	290	130	30	9,8	1620	2485x2300x830
7162D A3	-	425	290	130	30	11,8	1735	2485x2300x830
7162D A4	-	425	290	130	30	13,8	1825	2485x2300x830
7212D A2	20,2	415	315	130	80	9,7	1945	2520x2400x870
7212D A3	-	415	315	130	80	11,7	2090	2520x2400x870
7212D A4	-	415	315	130	80	13,7	2210	2540x2400x870
7212D A5	-	415	300	130	80	15,7	2305	2540x2400x870
7240D A2	20,5	415	335	130	80	9,7	1945	2520x2400x870
7240D A3	-	415	335	130	80	11,7	2090	2520x2400x870
7240D A4	-	415	335	130	80	13,7	2210	2540x2400x870
7240D A5	-	415	320	130	80	15,7	2305	2540x2400x870

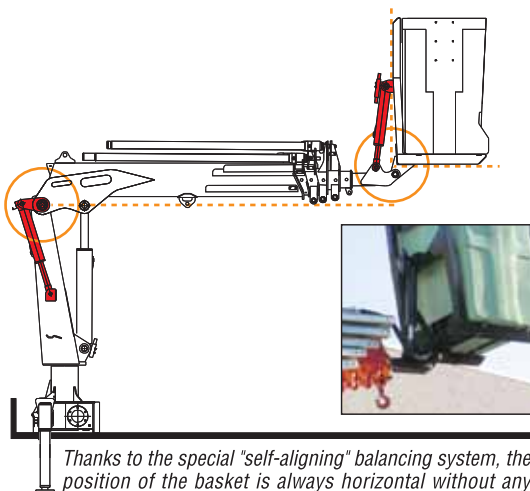


SKY

***Self-Aligning
basket***

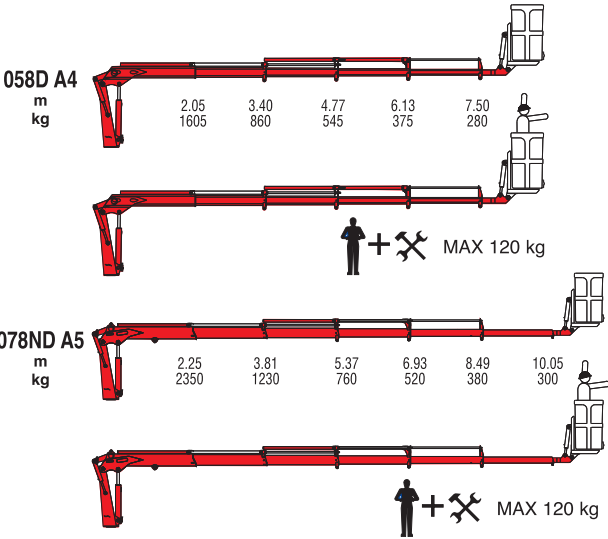
058D

078ND



Thanks to the special "self-aligning" balancing system, the position of the basket is always horizontal without any intervention from the user.

For non-CE markets only



MODELS	LIFTING MOMENT	SWINGING ANGLE	WORKING PRESSURE	OIL TANK CAPACITY	MAX OIL FLOW	MAX. VERTICAL REACH (HYDR.)	CRANE WEIGHT (STAB. STANDARD)	DIMENSIONS
	tm	°	bar	l	l/min	kg	kg	mm BxhxS
058D A4	3,29	380	220	35	15	13,30	940	3305x1940x850
078ND A5	5,29	387	220	35	18	16,00	1260	3765x2080x850



Features & Accessories



7000 - 9000 **NEW AGE**

New crane line sets new standards in design, performances, reliability and safety for truck mounted cranes.

A new control station, incorporating both crane and stabiliser controls, has an ergonomic working position and user-friendly interface which delivers better operator efficiency and safety together with improved productivity.

Dynamic Load Diagram allows advance verification of the crane lifting capacity based on the truck stability, and, Magic Touch allows automatic folding and unfolding to transport and working positions.

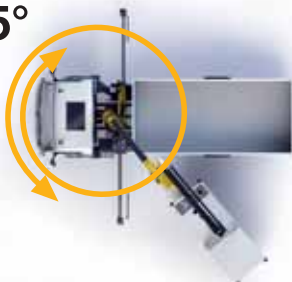
There are several options for radio remote control and a wide range of stabiliser configurations to ensure safe positioning of the truck in all ground conditions.



The wide slewing angle, 425°, is best-in-class for medium sized cranes. And, with an extensive range of accessories and attachments, the cranes are suited to a wide range of applications.

Durability and lifetime value too is high with enhanced resistance to adverse environmental conditions as a result of a long life painting process, anti-corrosion treatments on non-painted components, protected rubber hose tracks and assembly of components using specialist tools.

425°





Hex Deck cover on base

NEW AGE

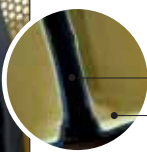
Functional aesthetic



Robust structural design and hose covers.



High volume oil tank made in sandwich-structured materials.



- 1st layer, PEX
- 2nd layer, PA6

TOP 7" colour display



NEW AGE

Ergonomic control station



The most ergonomic working position and user-friendly interface

Safe and fast stabilisation with outstanding supervision for operator.



LED lights on booms and controls for night working.
(only CE radio configuration)



Magic Touch

NEW AGE



Focus on innovation

A graphic display which allows the driver, after truck stabilisation, to automatically fold (from any position to transport position) and unfold (to working position) when required. This easy-to-use function improves driver attention, promotes safe operation, saves time and can increase productivity.



Dynamic Load Diagram



Focus on innovation

A new system which allows the driver to verify in advance the crane lifting capacity based on the truck stability. The operator can select the weight and, according to the stabiliser positions, the system calculates the stability all around the truck. A graphical display shows the outreach available for the load selected and the actual boom slewing position. This system, a first on truck-mounted articulated cranes, optimises stabilisation and makes crane operation safer and more efficient. Easy to use, saves time and improves safety through better crane stabilisation and avoidance of border line working conditions.

NEW AGE Line extended warranty

The best warranty conditions available in the industry today

With the **NEW AGE** Line we guarantee quality and reliability. All cranes have been fully tested with a rock solid development process: from market research to design, prototyping and Peld tests with users from different industries.

Hyva is proud to bring to you the best warranty conditions available in the industry today guaranteed with the quality and reliability of the **NEW AGE**.

3 Years general warranty



STATE OF THE ART CONSTRUCTION

NEW AGE line incorporates the most robust materials, state of the art electronics and hydraulic components.

MADE IN THE HEART OF THE AUTOMOTIVE AND HYDRAULICS VALLEY

Fully manufactured with no compromise in F.lli Ferrari plants in Italy, located in the heart of the “so called” automotive and hydraulics valley, which is the excellence of the workmanship available today not only in Italy, but in the World.

3 YEARS WARRANTY ON ALL COMPONENTS

All crane components not subjected to wear and tear, including painting, seals and hoses are covered by 3 years warranty. Exclusive Hyva conditions.

5 Years warranty on structural parts



STEEL IS GUARANTEED FOR 5 YEARS

NEW AGE Line offers 5 years warranty on structural parts: base, column, 1st boom, second boom, extensions, Jib, stabilizer beams, all the cylinders and pins, both for hook and winch operations.



NEW AGE
BREAK THE BOUNDARIES



CRANES 4.0

CONNECTING YOUR BUSINESS



NEW AGE

What is Cranes 4.0? Discover benefits and features!

A simple installation and a powerful web interface create the best combination to access to all crane data. A gateway GPS reads all data and send them to the cloud to store in a protected and organized way all crane analytics from crane sensors and electronics.

Cranes 4.0 is an accessory for your **Ferrari New Age** crane that ensure to growth of your business in the easiest but powerful way.

This will grant:

- **Improved control of your business**
- **Manage and maintain your crane with high efficiency**
- **Obtain remote support: focused, quick and efficient.**

Improve your efficiency with an easy remote crane management



Manage and maintain your crane more efficiently



Turnkey solution

Cranes 4.0 includes the gateway GPS (installed on the crane in factory or available as retrofit kit), SIM card with 5 years contract and full access to data on cloud portal (available from all devices).



Firmware update

From remote, the last firmware release installed on your crane without any hard stop or service intervent on the crane in field. This means that your crane will always be updated with improvements that we are constantly releasing as a result of the feedback received from the market.



Real time monitoring

The web interface shows all crane parameters in real time: sensors, angle, stabilizer position, ... You can follow and analyze the crane work directly from remote. Wherever you are connected to the Internet, live crane data will be available.



Maps

Geolocalize fleet to follow position, data and status your entire fleet. Totally transparent with respect to the operation of the crane.



Fleet to follow position, data and status

Display of time trend graphs of specific sensors (for example hydraulic oil temperature, oil pressure on the lifting cylinder, weight lifted, etc.). This means that it is also possible to carry out statistical analyses to improve crane maintenance through quick and easy functional monitoring, preventing breakdowns or providing ad hoc technical assistance.



Routes

See live on maps your crane routes during the day or in a specific timeline. Routes is useful to improve you daily job planning or reviewing transport cycles and working site visits.



Remote set-up

Crane configuration parameters can be modified to improve the efficiency for a specific application, abilitate a tool or troubleshooting. The advantage is the presence of a specialised technician is not required on site, who can do it remotely.



Black box events

Crane 4.0 gateway save all data events of the crane including alarms, arnings, sensors data ... All information are available for a better check of functionalities and history event.



Crane configurations CE market

All F.lli Ferrari cranes for CE markets comply with the European Standard EN 12999:2020 and EN 13849 for a higher level of safety and performance in crane controls.



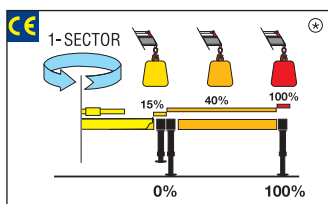
A new control station, incorporating both crane and stabiliser controls, has an ergonomic working position and user-friendly interface which delivers better operator efficiency and safety together with improved productivity.

Dynamic Load Diagram allows advance verification of the crane lifting capacity based on the truck stability, and, Magic Touch allows automatic folding and unfolding to transport and working positions.

There are several options for radio remote control and a wide range of stabiliser configurations to ensure safe positioning of the truck in all ground conditions.

Crane control system

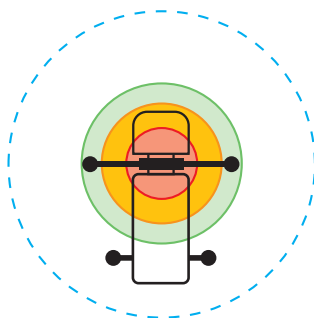
A CLASS



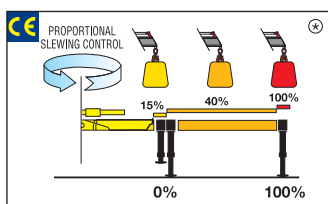
N. 2 step stabilizer beams

N. 1 sector on slewing

Mono-area pressure limit



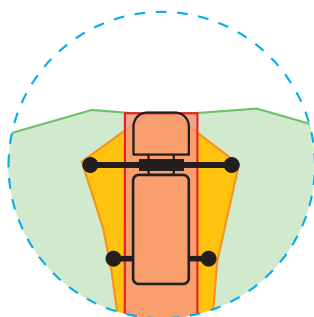
E CLASS



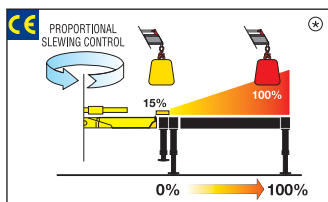
N. 2 step stabilizer beams

Proportional slewing control

Mono-area pressure limit



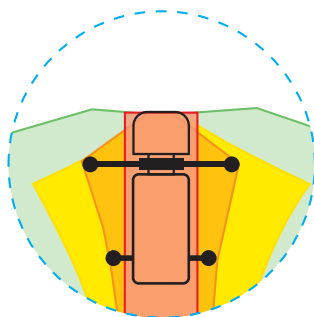
P CLASS



Proportional stabilizers control

Proportional slewing control

Truck side independent



■ Stabilizer's cylinders not on the ground

■ 0% stabilizer's beams and stabilizer's cylinders on the ground

■ 50% stabilizer's beams and stabilizer's cylinders on the ground

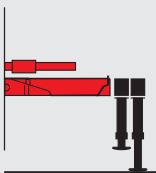
■ 100% stabilizer's beams and stabilizer's cylinders on the ground

■ Nominal pressure

⊛ The percentages present in the pictures are merely examples and they have no bearing on the cranes' real lifting capacities. The cranes' real lifting capacities will depend on truck's stability.



NEW STABILITY LOGIC



BE FREE TO MAXIMIZE THE USE OF YOUR CRANE FOR ALL STABILIZERS' POSITIONS.

Whether there is the space to extend the stabilizer's beams or not, whether there is the possibility to deploy the stabilizer's cylinders or not, an internal algorithm of the cranes' software computes all stability conditions and enables safe movements that the crane is allowed to perform, guaranteeing the maximum level of flexibility that each daily operation requires.

Human machine interface

Bright Led panel

L



Available for the entire range till 28 tm.

Highly user-friendly design, with buttons and LED lights. Dedicated led lights to identify the position of each stabilizer. New 3-digits display has been added to inform the operator about alarms and errors.

Intelligent Display 4.3"

D



Up to 6 languages available.

Full color new display. Offers more information and data compared to the LED Panel. The graphic design and intuitive menu guide the operator and service technician to all the functionality information, statistics and performances.

Smart Top monitor 7"

T



Up to 16 languages available into the software.

Top choice available for the range. Data statistics and crane management, all included into a 7" TFT monitor giving to the operator a higher level of awareness of the crane.



FEATURES FOR CRANE OPERATOR

FEATURE	LED PANEL	DISPLAY 4.3"	MONITOR 7"
Load capacity indication 80 - 90 - 100%	●	●	●
Crane status code displayed	●	●	●
Worklights option	●	●	●
Crane bypass option	●	●	●
Stabilizers position detection	●	●	●
Hour counter		●	●
Predictive maintenance alarm		●	●
Intuitive graphic design		●	●
Crane status messages		●	●
Multi-language		●	●
Predictive maintenance detailed			●
Crane performance stats (load, cycles, ...)			●
Dynamic load diagram			●

Crane controls

Manual control



Crane with manual sequential controls have levers mounted on both sides of the crane.

At each control station, the orientation of the controls can be the same up to down or left to right.

Single hand Remote control



The compact, ergonomic design of the transmitter allows easy operation of the crane with only one hand.

The operator chooses the function to move by pressing a switch and then, proportionally adjust the speed by pressing the trigger.

LCD Remote control



Each transmitter is equipped with 8 ergonomic proportional levers (6 for Scanreco mini) to control up to 8 functions of the crane.

Using two hands, the operator can move 2-3-4 functions at once.

This ensure more speed in loading or unloading operations with high precision.

Graphic Remote control



Top visualization on 3" graphic display on the remote transmitter. Improved crane data visualization and crane control.

Top level class proposal in the range.



CRANE CONFIGURATIONS CE

CRANE SELECTION	CRANE CONTROL SYSTEM			HUMAN MACHINE INTERFACE			CRANE CONTROL			
	A CLASS	E CLASS	P CLASS	LED PANEL	DISPLAY 4.3"	MONITOR 7"	MANUAL	SINGLE	LCD	GRAPHIC
1 - 3 tm	●			●			●	●		
4 - 8 tm	●	●		●	●		●	●	●	
9 - 18 tm	●	●	●	●	●	●	●		●	●
29 - 85 tm			●			●			●	●



STANDARD



OPTIONAL

Crane configuration CE market

MODEL	CE*	ALM	ALS	ALL	ADM	ADS	ADL	ELM	ELS
310	•								
314	•								
315		•	•						
317		•	•						
321	•								
322		•	•						
326		•	•						
329	•								
330		•	•						
350		•	•						
531	•								
538	•		•			•			
543	•	•	•		•	•		•	•
553		•	•		•	•		•	•
563		•	•	•	•	•	•	•	•
573		•	•	•	•	•	•	•	•
583		•	•	•	•	•	•	•	•
7090B		•		•	•		•	•	
7091C		•		•	•		•	•	
7091SC		•		•	•		•	•	
7103C				•			•		
7111C		•		•	•		•	•	
7111SC		•		•	•		•	•	
7112B		•		•	•		•	•	
7125C				•			•		
7130B		•		•	•		•	•	
7131C		•		•	•		•	•	
7131SC		•		•	•		•	•	
7153C				•			•		
7160B		•		•	•		•	•	
7161C		•		•	•		•	•	
7161SC		•		•	•		•	•	
7183C				•			•		
7210B		•		•	•		•	•	
7213C		•		•	•		•	•	
7213SC		•		•	•		•	•	
7231C				•			•		
7240B		•		•	•		•	•	
7243C		•		•	•		•	•	
7243SC		•		•	•		•	•	
7261C				•			•		
7401C									
7401SC									
7441C									
730									
734									
738R									
749R									
9265C									
9405C									
9445C									
9601C									
9661C									
990R									
7162D		•		•	•		•	•	
7212D		•		•	•		•	•	
7240D		•		•	•		•	•	

Crane control system - **A** = A Class • **E** = E Class • **P** = P Class
 Human machine interface - **L** = Bright led panel • **D** = Intelligent display 4.3" •
T = Smart TOP monitor 7"

Radio remote control



RADIOCONTROL

The operator can control the crane with high precision proportional levers in every position and, doing so, can supervise the loading and unloading operations.

That means a great time saving and a higher safety.

All the remote controls used by F.lli FERRARI have an identification code and are shielded from electromagnetic fields and from external radio signals.



Scanreco



Hetricon Not CE

Powered by

Danfoss



Radio remote control

The transmitter is equipped with a large display. Watching this display the operator always knows the lifting condition of the crane and is informed about possible warning messages or alarm codes. The data displayed is an exact copy of the data present on the ECM.

The transmitter is equipped with an ON-OFF switch in order to allow the user to engage the accessories (Winch, Grab/Rotator, Jib) without the necessity to use the buttons on the ECM. As on the standard transmitters, the CAN-Bus radio also allows control of the truck engine.



Hetronic CE Basic

Only the model 990R is standard equipped with CANBUS radio remote control on both CE and NO CE versions.



Hetronic CE Graphic



4" TFT HD-color display to keep the crane always under control

RDC

A crane in the palm of your hand

Innovative "Single Hand" radio remote control by Hetric

- Transmitter with compact dimensions and minimal weight
- Proportional speed control
- Single-hand control of every crane function by radio
- Safe stabilizer operation by radio control
- Cable control (optional)
- Transmitter operation with two batteries



RADIOCONTROL

FUNCTION SELECTION

PROPORTIONAL SPEED CONTROL



Receiver



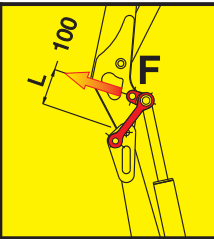
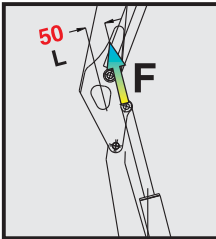




TWICE THE POWER*

STANDARD

RED POWER



Power = F x L

F = Strength of the lifting cylinder

L = Lever of the lifting cylinder

POWER 50%

POWER 100%

"Red Power" means more leverage to the crane booms. This leverage is achieved through an articulating connecting rod system.

**) In vertical position*

Constant capacity in all positions

"Red Power" brings more leverage to the crane booms and increases crane versatility for many working positions.

The double linkage joins the articulation cylinder to the boom. Its design raises the mechanical advantage of the articulation, to provide consistent force through all working angles.



OFF

Operator Full Protection

"The green area surrounding the operator represents the space where the crane's boom cannot enter."

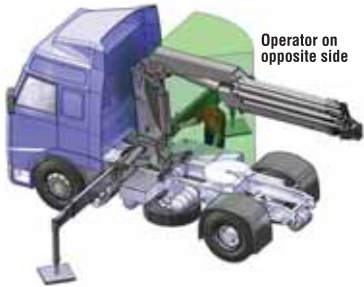
Our technical department developed a new safety system which monitors the control position where the operator is moving the crane, and prevents the crane's booms from entering the zone close to the operator.

Two presence sensors are mounted on the crane's control stations in order to verify where the operator is working, and other sensors monitor the control levers' positions. By sensors applied between the base and the column, the safety system can monitor the slewing sector where the crane is located. Two level sensors constantly monitor the position of the two booms.

Once the operator starts working from a control station, the Operator Full Protection System generates a limitation zone around him in order to avoid any interference between the operator and the crane.



Operator on control valve side



Operator on opposite side



This device shows the load at the hook on a display placed near the controls, making safe the use of the mechanical booms following the European rule EN12999. In case of a CE crane with mechanical booms it is mandatory to mount the RLC device.

Data, descriptions, and illustrations pertain only and uniquely to models sold at the time of printing of this brochure. After the date of printing, this information is purely indicative and not binding upon F.lli Ferrari. Future modifications are solely at the discretion of F.lli Ferrari and are always in compliance with applicable and pertinent safety standards. To obtain updated data, descriptions, and illustrations, contact the manufacturer or your reseller. Cranes manufactured and/or marketed by F.lli Ferrari.

F.lli Ferrari in the World



DEALER



Via Einstein, 4
42028 Poviglio (RE) Italy
Tel. +39 0522/486308
Fax +39 0522/486330
info@flliferrari.it
marketing@flliferrari.it
www.flliferrari.com

