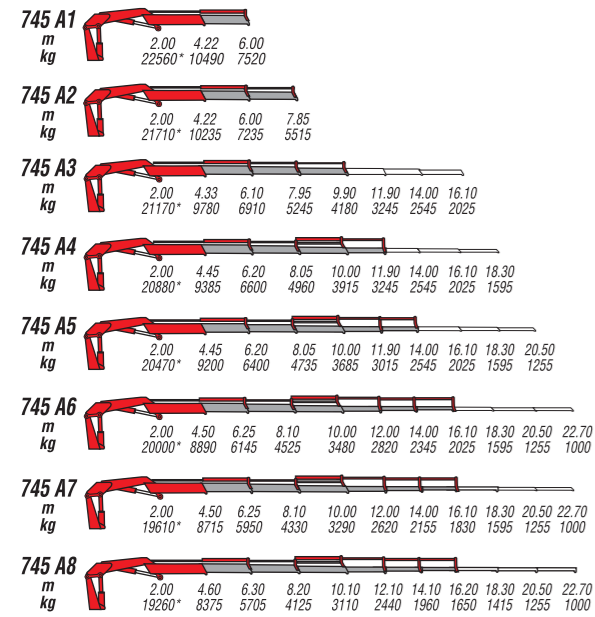


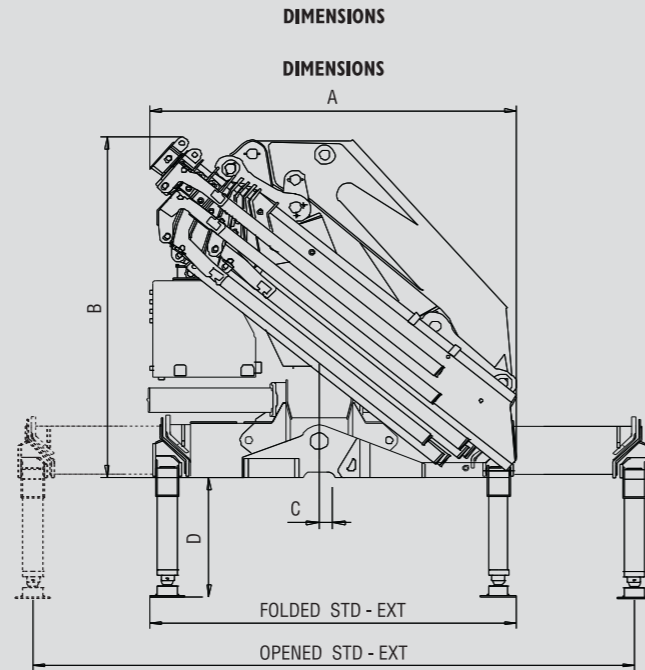
| MODELLI<br>MODELS | MOMENTO<br>LIFTING MOMENT | SBRACCIO ORIZ.<br>HORIZ. HYDRAULIC OUTREACH | PORTATA AL<br>DISTRIBUTORE<br>OIL FLOW TO THE CONTROL<br>VALVE | SBRACCIO MAX. VERTICALE<br>MAX VERTICAL REACH | PESO<br>WEIGHT | PRESSIONE<br>PRESSURE | INTERASSE STAB.<br>STANDARD APERTI<br>DISTANCE BETWEEN CENTRES<br>WITH OPENED OUTRIGGERS | INTERASSE STAB. EXTRA<br>APERTI<br>EXTRA WIDE DISTANCE<br>BETWEEN CENTRES WITH<br>OPENED OUTRIGGERS |
|-------------------|---------------------------|---|--|---|----------------|-----------------------|--|---|
|                   | tm                        | m   | l/min  | m   | kg             | bar                   | mm   | mm  |
| 745 A1            | 45                        | 6.00  | 80   | 10.3  | 4250           | 305                   | 5050   | 7400  |
| 745 A2            | -                         | 7.85  | 80   | 12.1  | 4540           | 305                   | 5050   | 7400  |
| 745 A3            | -                         | 9.9   | 80   | 14.1  | 4790           | 305                   | 5050   | 7400  |
| 745 A4            | -                         | 11.9  | 80   | 16.1  | 5080           | 305                   | 5050   | 7400  |
| 745 A5            | -                         | 14  | 80   | 18.2  | 5300           | 305                   | 5050   | 7400  |
| 745 A6            | -                         | 16.1  | 80   | 20.3  | 5490           | 305                   | 5050   | 7400  |
| 745 A7            | -                         | 25.9  | 80   | 30.1  | 6350           | 305                   | 5050   | 7400  |
| 745 A8            | -                         | 18.3  | 80   | 22.5  | 5680           | 305                   | 5050   | 7400  |

Autocarro consigliato - Recommended truck - Camion conseillé - Camion aconsejado  
M.T.T. ton 24 - G.V.W. ton 24

**STANDARD**



\*) Portata teorica  
Theoric lifting capacity



| Mod.   | FOLDED |      |    | OPENED |      |     |
|--------|--------|------|----|--------|------|-----|
|        | A      | B    | C  | STD    | EXT  | D   |
| 745 A1 | 2128   | 2460 | 95 | 2503   | 2503 | 875 |
| 745 A2 | 2128   | 2460 | 95 | 2503   | 2503 | 875 |
| 745 A3 | 2210   | 2460 | 95 | 2503   | 2503 | 875 |
| 745 A4 | 2315   | 2460 | 95 | 2503   | 2503 | 875 |
| 745 A5 | 2372   | 2460 | 95 | 2503   | 2503 | 875 |
| 745 A6 | 2455   | 2460 | 95 | 2503   | 2503 | 875 |
| 745 A7 | 2515   | 2725 | 95 | 2503   | 2503 | 875 |
| 745 A8 | 2464   | 2460 | 95 | 2503   | 2503 | 875 |

SPAZIO RICHIESTO PER L'INSTALLAZIONE  
NECESSARY SPACE FOR INSTALLATION

| 745    | Con attivazioni - With extra function |      |
|--------|---------------------------------------|------|
| 745 A1 | 1360                                  | *    |
| 745 A2 | 1360                                  | 1650 |
| 745 A3 | 1360                                  | *    |
| 745 A4 | 1360                                  | 1650 |
| 745 A5 | 1360                                  | *    |
| 745 A6 | 1360                                  | 1650 |
| 745 A7 | 1500                                  |      |
| 745 A8 | 1500                                  |      |

\*) Non attivabile  
No extra functions



# Ferrari 745

PASSION FOR LIFTING

I

La gru F.II Ferrari mod. 745 racchiude in se caratteristiche tecniche e meccaniche di elevata qualità

- Acciai ad alto limite di snervamento
- Struttura interamente sabbiata
- Bracci esagonali
- Sbracci fino a 20,5 m
- Valvole di sicurezza flangiata
- Power Boost
- Limitatore di momento
- Valvola rigenerativa sugli sfilii idraulici
- Filtro in pressione/scarico
- Pattini di scorrimento sugli elementi telescopici
- Boccole autolubrificanti
- Raccorderia SAE JIC 1514I
- Gancio girevole
- Kit di montaggio compreso
- Red power
- Stabilizzatori orientabili
- Stabilizzatori estendibili idraulicamente
- Piattello stabilizzatore snodato

**Accessori**

- Prolunghe meccaniche
- Stabilizzatori girevoli 180° automatici
- Comandi supplementari attivati\*
- Traverse supplementari
- Verricello idraulico
- Utilizzo con attrezzo\*
- Scambiatore di calore



GB

The crane model 745 from F.II Ferrari has been projected and manufactured with high quality technical and mechanical characteristics

- Steel at high yield point
- Structure fully sandblasted
- Hexagonal booms
- Hydraulic outreach until 20.5 mt
- Flanged valves
- Power Boost
- Load limiting device
- Regenerating valve on hydraulic booms
- Return filter
- Sliding pads on the telescopic elements
- Self-lubricating bushings
- SAE JIC 1514I fittings
- Turning hook
- Mounting kit included
- Red power
- Fixed outriggers
- Hydraulic opening cylinders
- Articulated outrigger plate

**Accessories**

- Mechanical booms
- Automatic and tilting 180° stabilizers
- Extra functions\*
- Extra beams
- Hydraulic winch
- Use with special equipments\*
- Oil cooler



F

La grue modèle 745 F.II Ferrari est conçue avec des caractéristiques techniques et mécaniques de plus haute qualité

- Acier à résistance élevée
- Structure complètement sablée
- Extensions hexagonales
- Portée hydraulique jusqu'à 20,5 Mt
- Soupapes de sûreté bridées
- Power Boost
- Limiteur de moment
- Soupape régénération huile sur extensions hydrauliques
- Filtre de retour
- Patins de coulissement sûr les éléments telescopiques
- Douilles autolubrificantes
- Raccords SAE-JIC 1514I
- Crochet tournant
- Kit de montage inclus
- Red power
- Béquilles fixes
- Béquilles à ouverture hydraulique
- Plat d'appui béquille avec joint à rotule

**Accessoires**

- Rallonges mécaniques
- Béquilles tournantes 180° automatiques
- Circuits supplémentaires activées\*
- Béquilles supplémentaires
- Treuil hydraulique
- Utilisation avec accessoires\*
- Refroidisseur huile



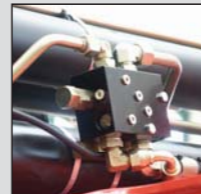
D

Das Kranmodell 745 vom F.II Ferrari ist mit höchsten Qualität für technischen und mechanischen Eigenschaften projiziert und hergestellt worden

- Stahl mit hoher Fließgrenze
- Sandstrahlen der Struktur
- Sechswinklige Ausschübe
- Hydraulische Reichweite bis 20,5 mt.
- Geflanschte Sicherheitventile
- Power Boost
- Momentbegrenzer
- Regenerationsventil auf den Ausschüben
- Druckfilter
- Gleitschuhe auf den Ausschüben
- Selbstschmierende Buchsen
- SAE JIC 1514I Anschlüsse
- Schwenkbarer Haken
- Einsatzbau eingeschlossen
- Red power
- Feste Abstützungen
- Abstützungen mit hydraulischen Öffnung
- Gelenkstutzscheibe

**Zubehöre**

- Mechanische Verlängerungen
- Automatisch drehbare 180° Abstützbeine
- Zusatzfunktionen\*
- Zusatzabstützungen
- Hydraulische Seilwinde
- Benutzung mit Zubehören\*
- Ölkühler



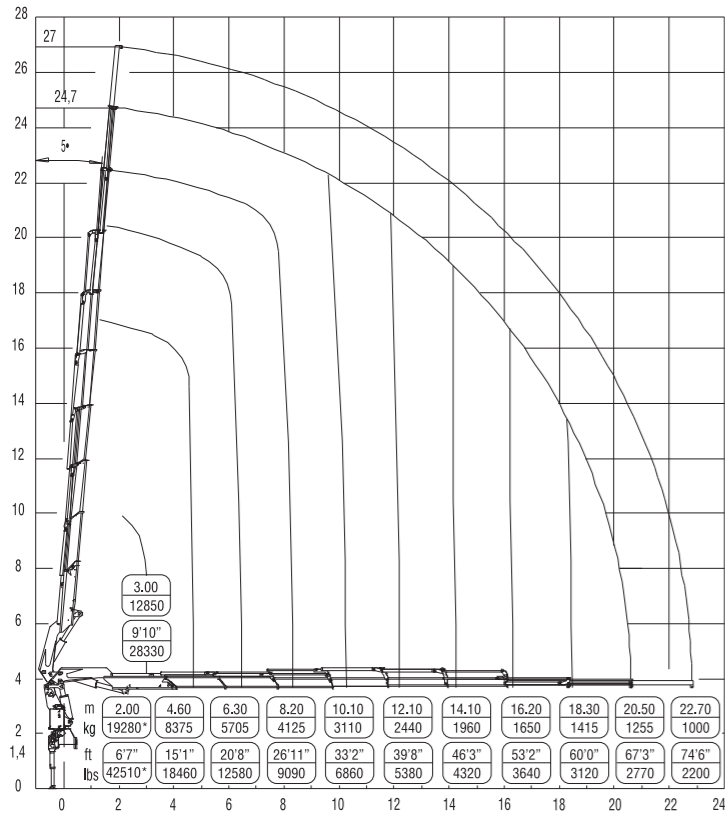
SP

El modelo de la grúa 745 de F.II Ferrari se ha proyectado y fabricado con características técnicas y mecánicas de alta calidad

- Acero en alto borde de rendimiento
- Estructura completamente arenada
- Prolongas hexagonales
- Alcances hidráulicos hasta mt. 20.5
- Valvulas de seguridad ensanchadas
- Power Boost
- Limitador de carga
- Valvula de regeneracion sobre las prolongas
- Filtro en descarga
- Patín de deslizamiento sobre las prolongas telescopicas
- Casquillos autolubrificantes
- Empalmes SAE-JIC 1514I
- Gancho giratorio
- Kit de montaje incluido
- Red power
- Estabilizadores fijos
- Estabilizadores con abertura hidráulica
- Plato de apoyo de patas articulado

**Acesorios**

- Prolongas mecanicas
- Patas giratorias 180° automaticas
- Activaciones adicionales\*
- Patas adicionales
- Cabrestante hidraulico
- Utilización con accesorios\*
- Cambiador de calor



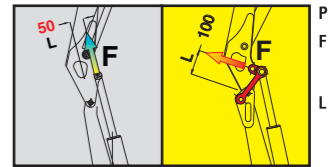
\*) Portata teorica  
Theoric lifting capacity



**RED POWER,  
FINO AL DOPPIO DELLA POTENZA\***

**RED POWER,  
TWICE THE POWER\***

**STANDARD RED POWER**



**POWER 50% POWER 100%**

Potenza/Power = F x L

F = Forza del martinetto  
Strength of the jack  
luff cylinder

L = Leva del martinetto  
Lever of the jack  
luff cylinder

Red power è sinonimo di maggior potenza di articolazione dei bracci gru, realizzato tramite un sistema di bielle di articolazione.

"Red Power" means more leverage to the crane booms. This leverage is achieved through an articulating connecting rod system.



\*) In posizione verticale  
In vertical position

**RED POWER**

**Ferrari**  
PASSION FOR LIFTING